



2902/462 Elizabeth Street Melbourne VIC

2 2

Situated at one of Melbourne's most exclusive addresses, the 'Victoria One' complex, designed by Elenberg Fraser, is sure to captivate both owner-occupiers and savvy investors..

Timber floors, floor-to-ceiling windows and neutral colour scheme add timeless appeal and modern vibrancy to the 2 bedroom, 2 bathroom open-plan layout, including a sleek kitchen boasting Miele appliances, stone benchtops and mirrored splashback.

The perfect lock-up-and leave City retreat, complete with split system heating/AC, sunroom and resort-style facilities including a fully-equipped gym, swimming pool and spa,

Type : Apartment

Price : \$510,000-\$561,000

View : <https://www.areal.com.au/sale/vic/inner-city/melbourne/residential/apartment/8153420>

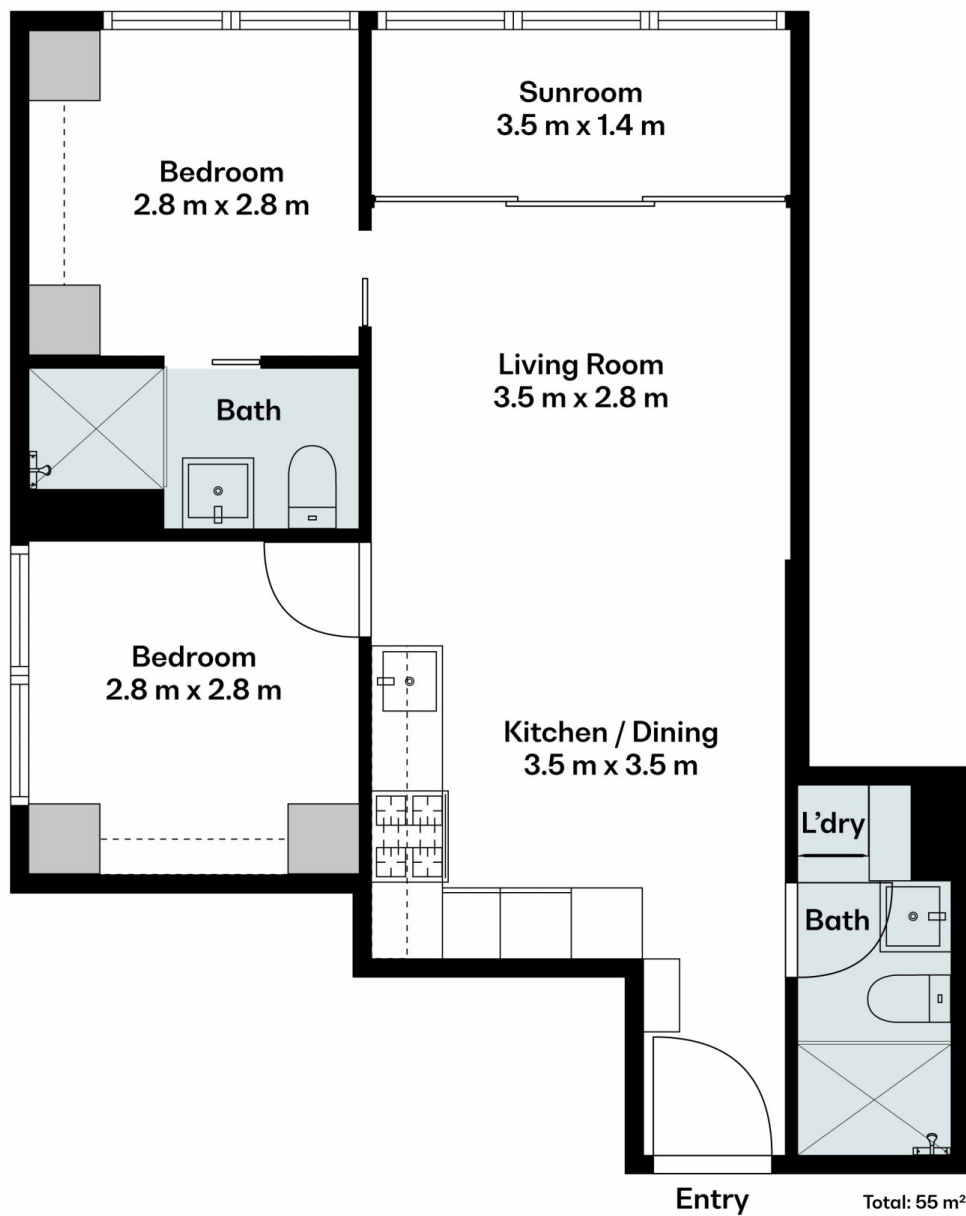


Andy Yuan
03 8686 8388



Dave Tang
03 8686 8388

[For full version visit the website](https://www.areal.com.au)



A/REAL

Scale in metres. Indicative only. All information contained herein is obtained from sources we believe to be accurate. We cannot guarantee its accuracy. You should make and rely on your own enquiries.

