

2904/9 Waterside Place Docklands VIC

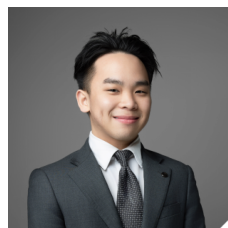
2 2 2

Located in the breathtaking 'Concavo' Building, this 2 bedroom, 2 bathroom, executive apartment has a prime waterfront location with direct access to Victoria Harbour Marina and the Promenade. Luxuriously appointed with all you need for a convenient lifestyle, this home offers a spacious layout and quality fittings throughout. Walls of glass surround the open-plan living/dining, offering a perfect view of the cityscape. At night, you can sit back and relax as the twinkling city lights come to life, while entertaining guests will be a pleasure on the covered north-facing balcony. Contemporary elegance is on show in the well-equipped stone kitchen complete with a large island bench and quality stainless steel appliances. Appreciate the comfort of ducted heating/cooling and

Type : Apartment

Price : \$950,000-\$1,050,000

View : <https://www.arel.com.au/sale/vic/inner-city/docklands/residential/apartment/8151614>

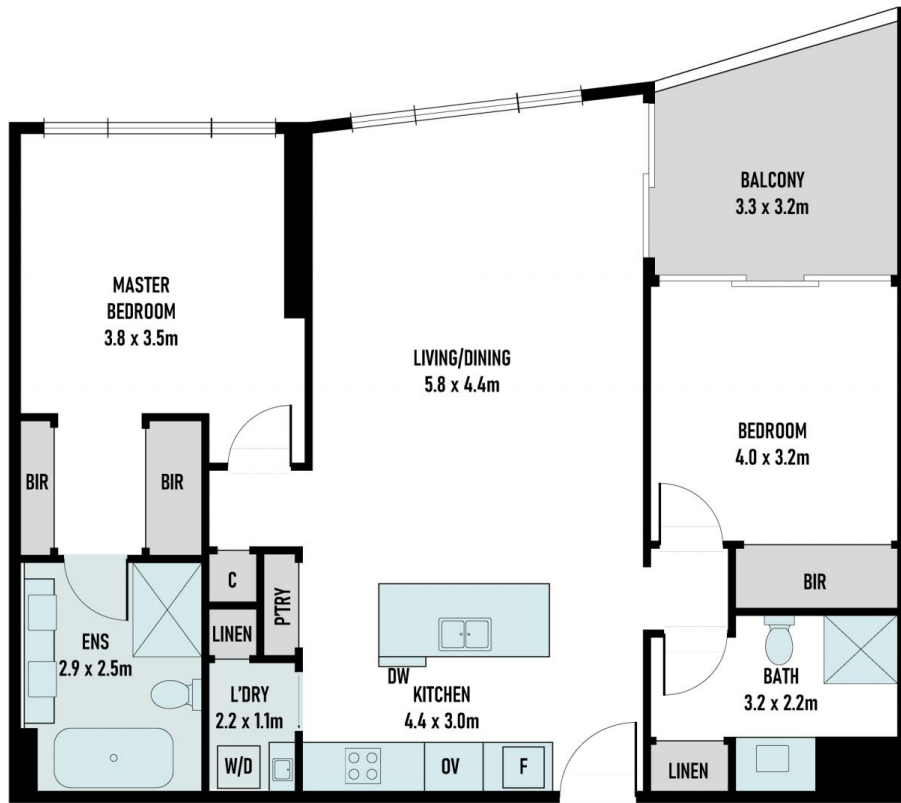


Aaron Tan
03 8686 8388



Jason Low
03 9116 5797

[For full version visit the website](https://www.arel.com.au)



INTERNAL : 92M²
 EXTERNAL : 9M²
 TOTAL AREA : 101M²



Scale in metres. Indicative only. All information contained herein is obtained from sources we believe to be accurate. We cannot guarantee its accuracy. You should make and rely on your own enquiries

