



10 Ravensthorpe Lane Epping VIC

3 2 2

This contemporary two-storey home has been meticulously upgraded with premium features, offering modern living at its finest.

The sleek, renovated kitchen boasts stone benchtops, Franke tapware, and Bosch stainless steel appliances, including a cooktop, oven, and range hood. The 2-pac white cabinetry with soft-close doors and black handles complements the upgraded lighting, featuring a modern light bar. The laundry is similarly renovated, matching the kitchen's design for a cohesive flow throughout the home.

Enjoy comfort year-round with upgraded split systems (Daikin upstairs and Samsung downstairs), enhanced with

[For full version visit the website](https://www.areal.com.au)

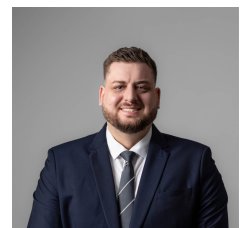
Type : Townhouse

Price : \$ 650,000

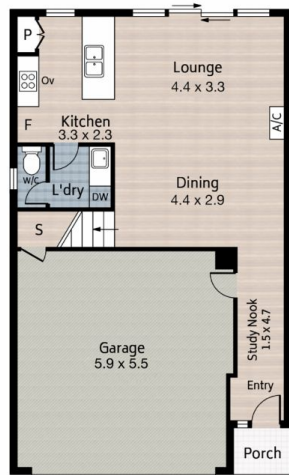
View : <https://www.areal.com.au/sale/vic/north/epping/residential/townhouse/8129013>



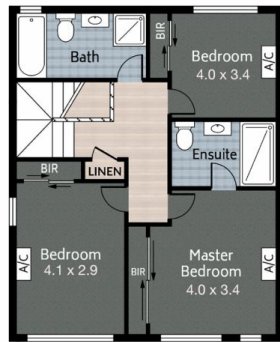
Justin Sciola
03 8804 5888



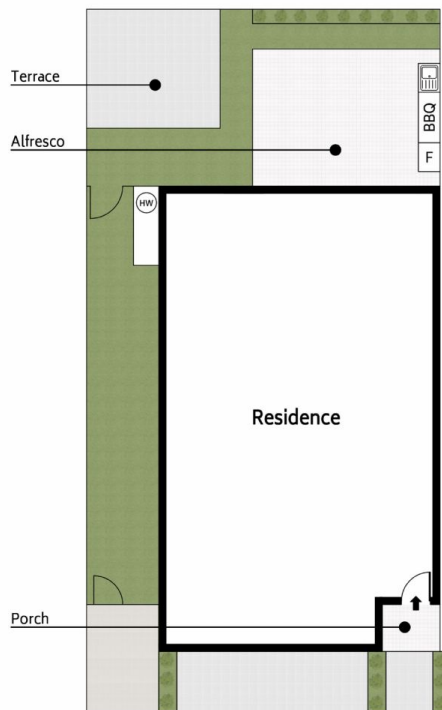
Ben Pellicori
03 8804 5888



//FLOOR PLAN/Ground Floor



//FLOOR PLAN/First Floor



//SITE PLAN

3 Bed

2 Bath

2 Car

Please note: This floor plan has been produced for marketing purposes and should be used as a guide only. All measurements are approximate and any person using this information should rely on their own enquiries.

Produced by MAISONSNAP.COM.AU