

2/11 Caleb Street Bentleigh East VIC

4 2 2

A striking architectural design that infuses luxury and style into modern living, this tri-level residence delivers an indulgent lifestyle with exceptional low-maintenance allure.

Superior finishes, timber floors and a soft timeless colour scheme add contemporary chic and sophistication to the streamlined kitchen/meals area, flaunting quality appliances, stone surfaces, island bench and an abundance of custom-designed cabinetry, and flowing through to a sun-soaked living room.

4 robed bedrooms including one placed on the ground floor, and a deluxe master suite fitted with lavish twin ensuite featuring stunning matte black tapware and WIR

[For full version visit the website](https://www.areal.com.au)

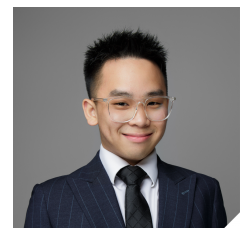
Type : Townhouse

Price : \$1,291,000-\$1,420,000

View : <https://www.areal.com.au/sale/vic/bayside/bentleigh-east/residential/townhouse/8128817>



Andy Yuan
03 8686 8388



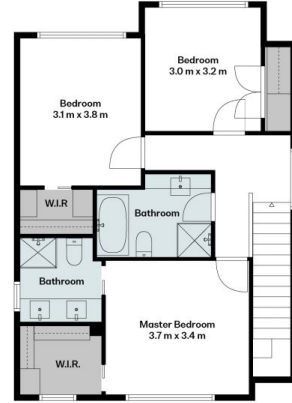
Aaron Tan
03 8686 8388



Basement



Ground Floor



First Floor

Indoor Area: 140 m²
 Garage: 34 m²
 Patio: 34 m²



Scale in metres. Indicative only. All information contained herein is obtained from sources we believe to be accurate. We cannot guarantee its accuracy. You should make and reply on your own enquiries.

