



7/225 Williams Road South Yarra VIC

3 **2** **2**

Indulging in a life of low-maintenance luxury, this glamorous tri-level townhouse sits in the architecturally designed 'Manteau' complex and delivers everything you need right to your doorstep, with exciting culinary and retail precincts only a hop, skip and jump away, along with buses, trams and trains.

An endless stream of northern sunshine filters through the immaculate north-facing courtyard and into the open plan living and dining domain, which delights in a seamless indoor-outdoor design and sleek kitchen that showcases Caesarstone benchtops, stainless steel appliances plus a breakfast bench.

Type : Townhouse

Price : Auction \$1,290,000-\$1,419,000

View : <https://www.areal.com.au/sale/vic/inner-city/south-yarra/residential/townhouse/8121287>



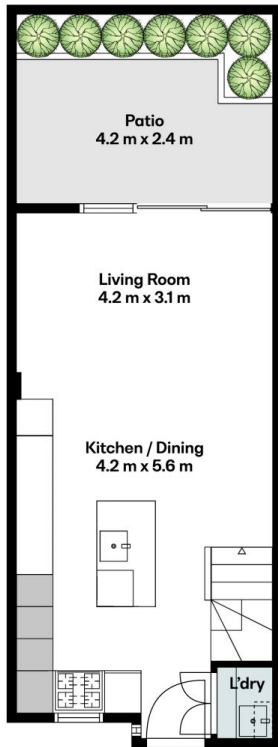
Dave Tang
03 8686 8388



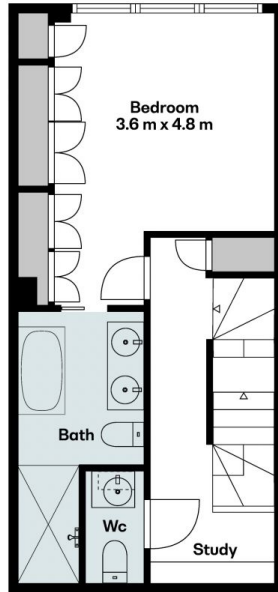
Andy Yuan
03 8686 8388

[For full version visit the website](https://www.areal.com.au)

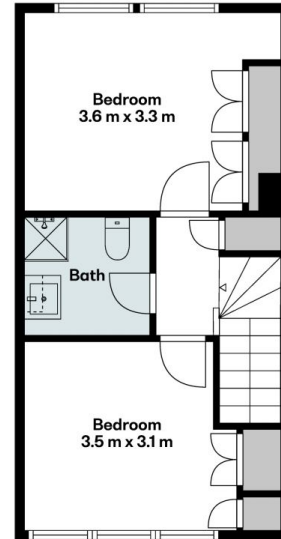
Living Area: 109 m²
Patio: 10 m²



Ground Floor



First Floor



Second Floor

A/REAL

Scale in metres. Indicative only. All information contained herein is obtained from sources we believe to be accurate. We cannot guarantee its accuracy. You should make and rely on your own enquiries.

