



28 Hanworth Avenue Williams Landing VIC

4 2 2

Step inside and be welcomed by an aura of sophistication and beautiful zoned living with this contemporary family residence, a testament to forward-thinking design and superior craftsmanship.

Embodying the perfect blend of elegance and functionality, a spacious living room flows effortlessly to a vast open-plan family/dining area, served by a central gourmet kitchen featuring stainless steel appliances, ample storage and island bench.

Moving outdoors you will discover a huge alfresco, providing the perfect place to host and entertain guests all year round.

Ascending to the upper-level, appreciate the space offered by 4 robed bedrooms,

Price : \$990,000-\$1,089,000

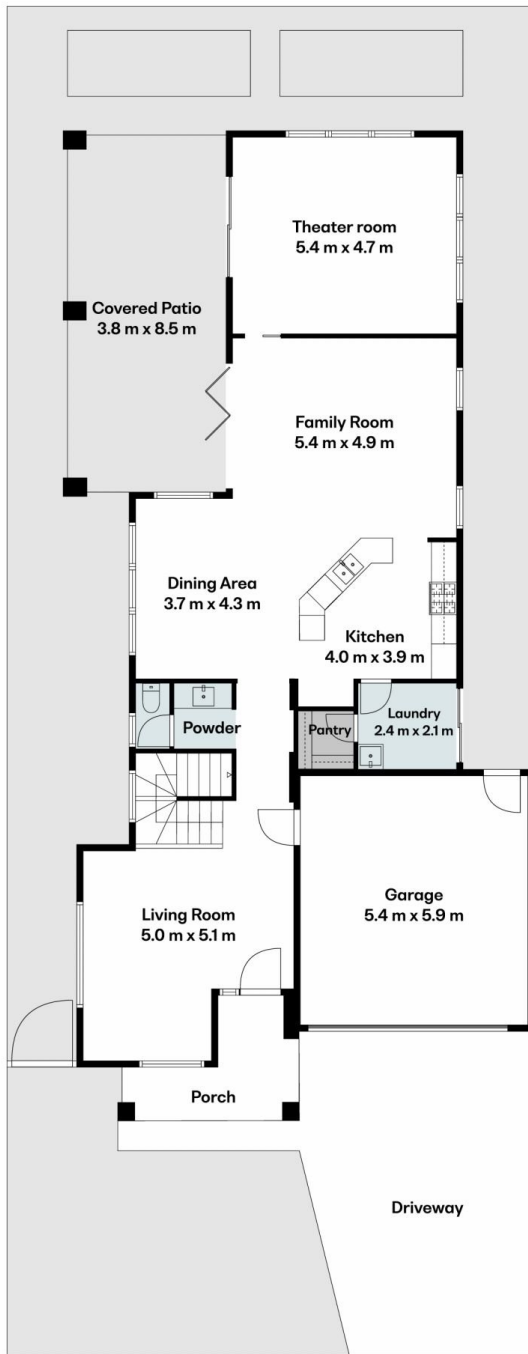
View : <https://www.areal.com.au/sale/vic/west/williams-landing/residential/house/8114360>



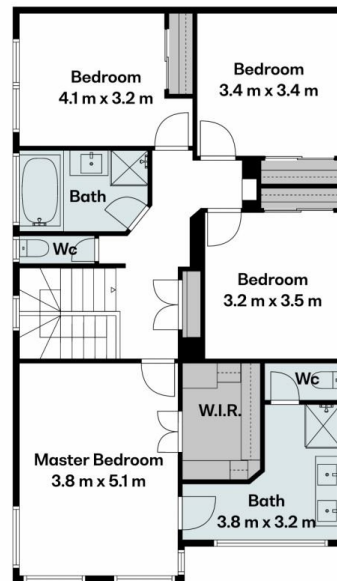
Andy Yuan
03 8686 8388



Kailey Wang
03 8686 8388



Ground Floor & Site Plan



First Floor