



517/555 Saint Kilda Road Melbourne VIC

2 2 1

Beautifully positioned on Melbourne's most iconic boulevard, this opulent apartment is securely nestled within the cutting-edge Fender Katsalidis designed 'Parque' building.

Defined by timber flooring, full-height windows and high-end finishes, the impressive interiors include an open-plan living/dining area, striking custom-designed kitchen featuring quality appliances and stone surfaces, plus an enclosed balcony capturing saturating northern sun.

Appreciate the space offered by 2 double-sized bedrooms with BIR's (including palatial main with luxurious ensuite), lavish fully-tiled bathroom and

Type : Apartment

Price : \$650,000-\$715,000

View : <https://www.areal.com.au/sale/vic/inner-city/melbourne/residential/apartment/8111462>

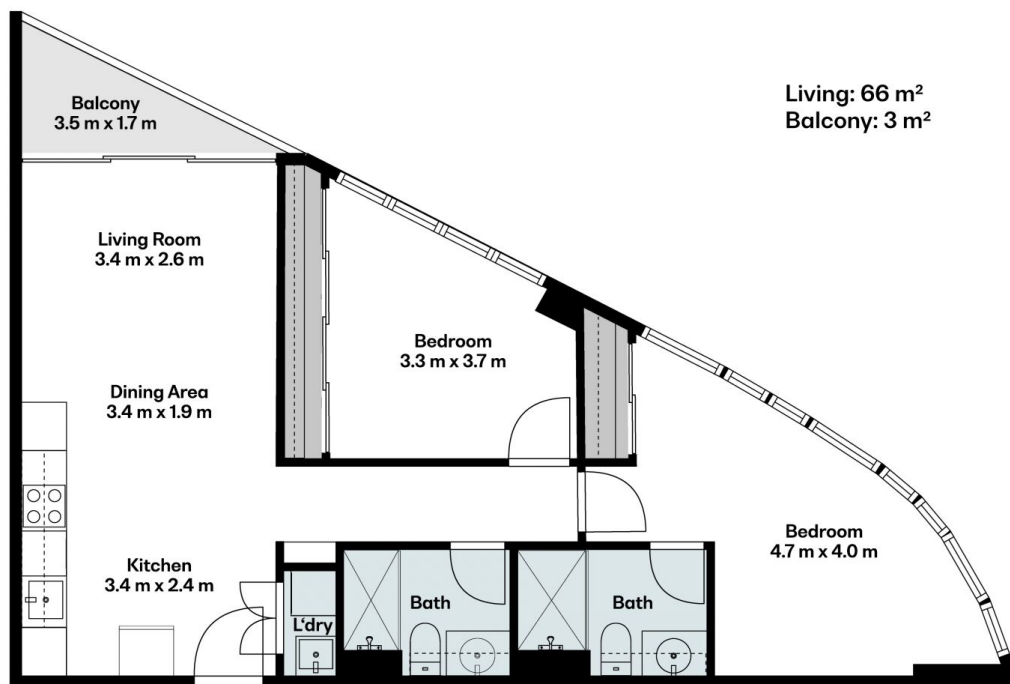


Andy Yuan
03 8686 8388



Dave Tang
03 8686 8388

[For full version visit the website](https://www.areal.com.au)



A/REAL

Scale in metres. Indicative only. All information contained herein is obtained from sources we believe to be accurate. We cannot guarantee its accuracy. You should make and rely on your own enquiries.

