



1/10 Wordsworth Avenue Clayton South VIC

2 🛏 1 🚿 2 🚗

With the independence of its own street frontage and driveway. One of only four with ideal proportions for young families, first-time buyers, downsizers, and investors alike.

Gleaming timber floors enhance the open-plan living/dining area, served by a modern kitchen with quality stainless steel appliances. Two inviting bedrooms are both fitted with BIRs, with a separate bathroom and toilet, whilst alluring extras include split system AC, separate laundry, garage with extra parking on the driveway and a large front yard behind a private fence.

All for you to enjoy, with bus stop at your footstep taking you to Moorabbin - Keysborough, a short walk to Westall

[For full version visit the website](https://www.areal.com.au)

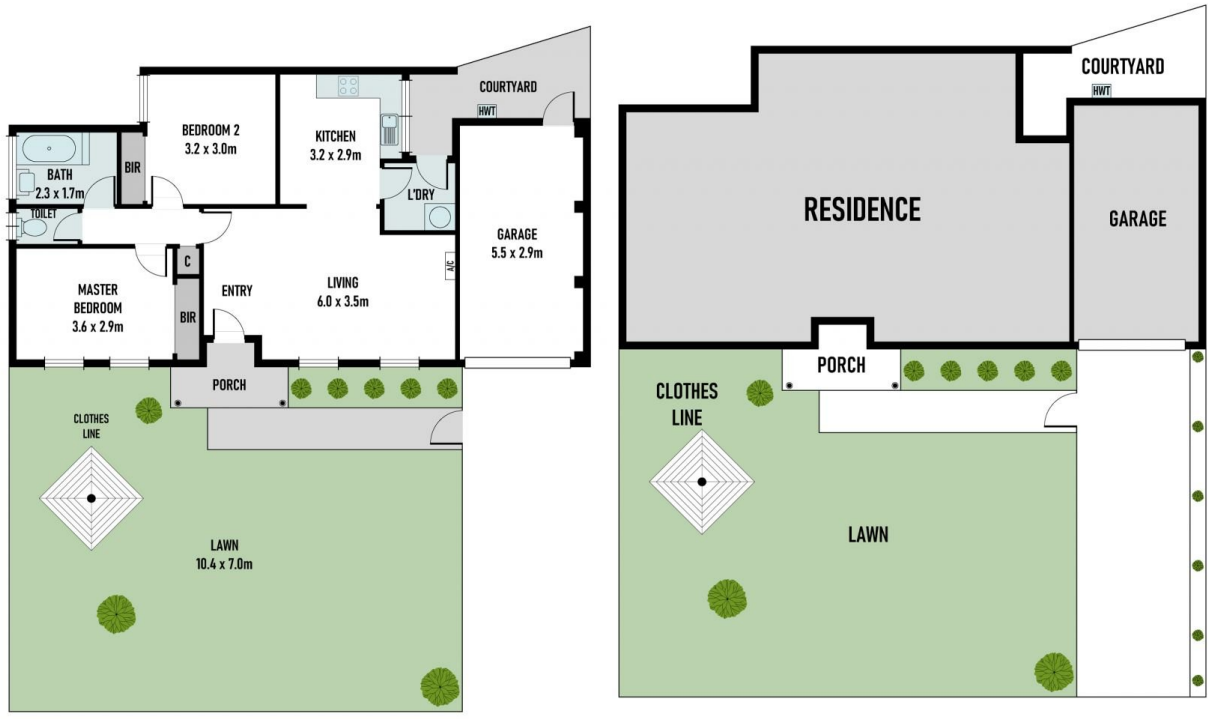
Type : Unit
Price : Auction \$400,000-\$440,000
Building Size : 74 sqm
View : <https://www.areal.com.au/sale/vic/south-east/clayton-south/residential/unit/8110756>



Keith Chan
03 9818 8991



Radek Skorupski
03 9818 8991



Scale in metres. Indicative only. All information contained herein is obtained from sources we believe to be accurate. We cannot guarantee its accuracy. You should make and rely on your own enquiries

