

402/30 Bush Boulevard Mill Park VIC

2 🛏 2 🚿 1 🚗

****Scheduling your property inspection is now a breeze!** Simply click on the "Book an Inspection" or "Request a Time" button to secure your appointment. You'll instantly receive a confirmation and be kept up-to-date with any alterations or cancellations concerning your scheduled visit. Please be aware, inspections may be subject to cancellation if no bookings are registered. Make your booking today and take the first step in finding your ideal home**

View : <https://www.areal.com.au/lease/vic/north/mill-park/residential/apartment/8104355>



Ranjit Singh
0391165797

Mason Point is the ultimate in contemporary Melbourne living offering security for the family, 200m from Westfield Shopping Centre & only 800m away from the train station!

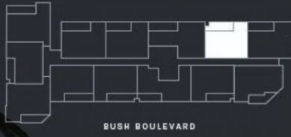
This impressive, immaculate and exciting apartment welcomes you instantly with an abundance of natural light.

APT. 402

2 BED | 2 BATH | 1 CAR

INTERNAL	BALCONY	TOTAL
73m ²	10m ²	83m ²

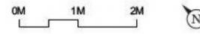
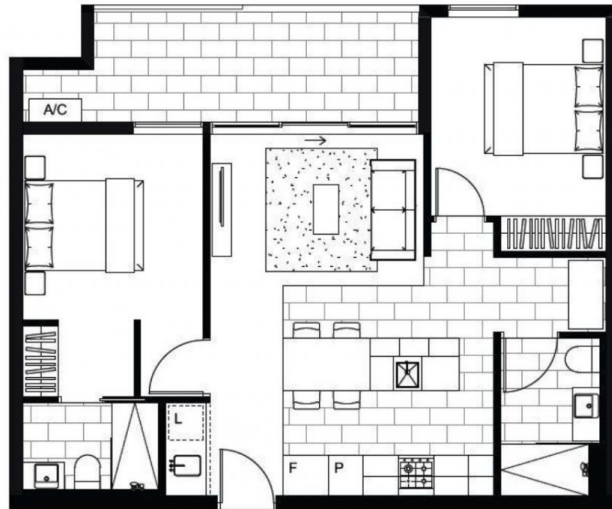
APARTMENT LOCATION KEY - LEVEL 4



BUSH BOULEVARD

JOINERY & FIXTURES KEY

- P PANTRY
- F FRIDGE LOCATION
- L LAUNDRY
- A/C CONDENSER UNIT



All drawings, layouts and area calculations are indicative only and are subject to approval by relevant authority and alterations due to design development. Area calculated in accordance with plan method of measurement for residential property. Furniture is indicative for display purposes only. The dimensions are approximate only and may not accurately represent the actual dimensions and are subject to change without notice during design development and construction.