

601/398 Elizabeth Street Melbourne VIC

1 1

Situated in the iconic "Empire" building, known for its architectural presence, unrivalled luxury and sophistication, this unique 70sqm dual-level apartment is a rare opportunity of first-class prestige.

Price : Auction \$385,000-\$415,000

View : <https://www.areal.com.au/sale/vic/inner-city/melbourne/residential/apartment/8102166>

A double-height ceiling, state-of-the-art finishes and timber floors create a spectacular impact throughout its over-sized proportions, with expansive open-plan living/dining incorporating a deluxe kitchen flaunting illustrious stone surfaces and high-end appliances.

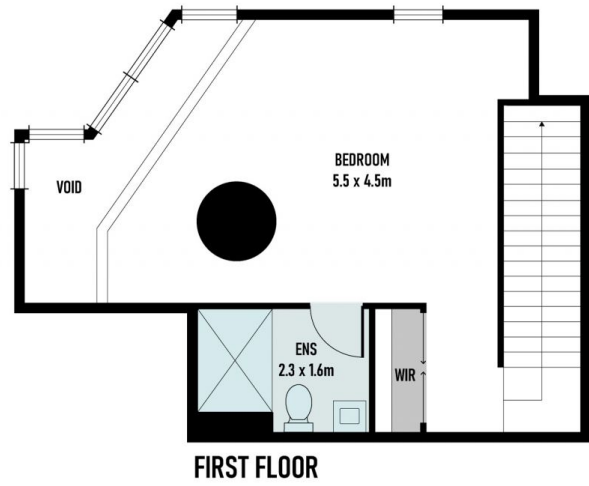
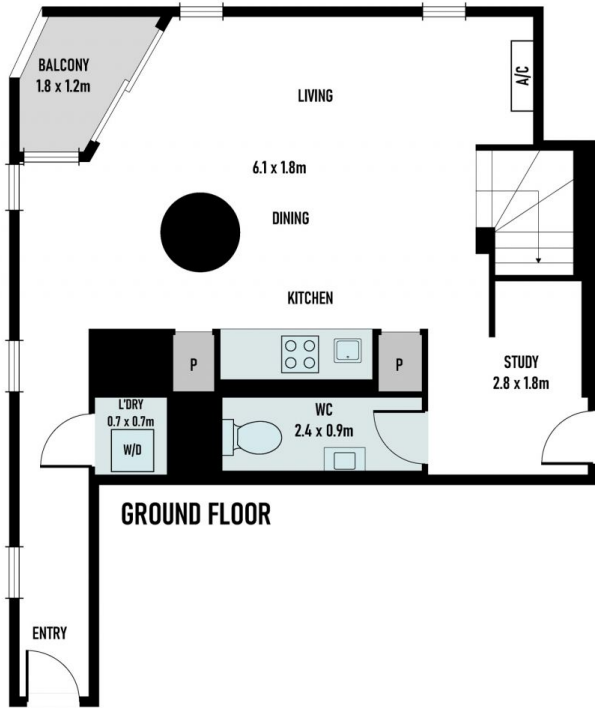


Kay Lim
03 8686 8388



Keith Chan
03 9818 8991

The upper-level is dedicated to a palatial-sized bedroom, lavishly appointed with a stunning ensuite/WIR, while heating/AC, study, powder room and balcony add to the exclusivity of this heart-of-the-city retreat.



A/REAL

Scale in metres. Indicative only. All information contained herein is obtained from sources we believe to be accurate. We cannot guarantee its accuracy. You should make and rely on your own enquiries

