

6/23 Waltham St Richmond VIC

2 1 1

**\*\*Scheduling your property inspection is now a breeze! Simply click on the "Book an Inspection" or "Request a Time" button to secure your appointment. You'll instantly receive a confirmation and be kept up-to-date with any alterations or cancellations concerning your scheduled visit. Please be aware, inspections may be subject to cancellation if no bookings are registered. Make your booking today and take the first step in finding your ideal home\*\***

**FURNISHED** - Step into the inviting ambiance of this two-bedroom apartment, radiating warmth and light. The well-designed living space seamlessly combines openness and comfort, providing the ideal setting for both relaxation and entertaining. Climate control ensures a pleasant environment year-round.

**Land Size** : 362 sqm

**View** : <https://www.areal.com.au/lease/vic/inner-city/richmond/residential/apartment/8098119>



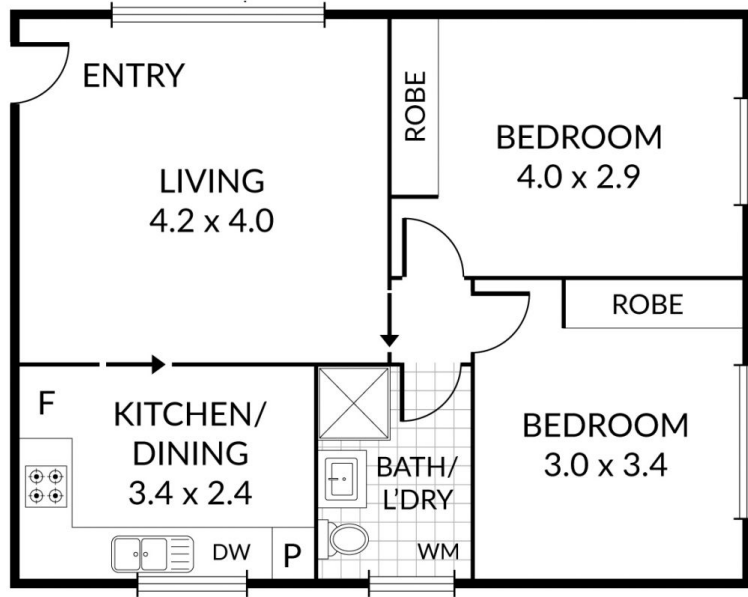
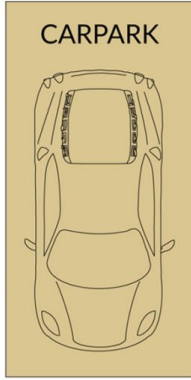
**Joseph Wong**  
03 9818 8991

Internal 54m<sup>2</sup> External 0m<sup>2</sup> Total 54m<sup>2</sup>

6/23 Waltham Street, **Richmond**



2 x 1 x 1 x



**NOTE:** Every precaution has been taken to verify the accuracy of the above details. However, prospective purchasers are advised to make their own enquiries.