



7 Lesley Street Camberwell VIC

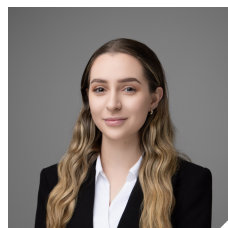
4 2 2

****Scheduling your property inspection is now a breeze!** Simply click on the "Book an Inspection" or "Request a Time" button to secure your appointment. You'll instantly receive a confirmation and be kept up-to-date with any alterations or cancellations concerning your scheduled visit. Please be aware, inspections may be subject to cancellation if no bookings are registered. Make your booking today and take the first step in finding your ideal home**

This superbly renovated four-bedroom family home, located in the highly sought-after Wattle Park precinct, is designed to impress. Elevated on a grand north-facing allotment of approximately 880sqm, this residence

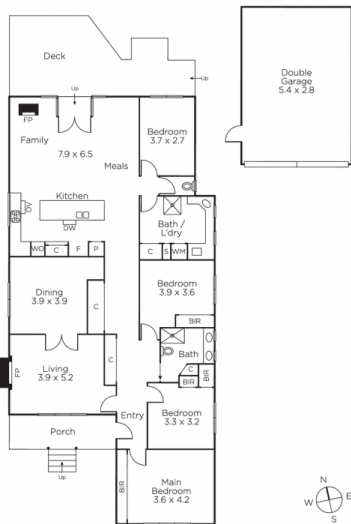
[For full version visit the website](https://www.areal.com.au/lease/vic/-/camberwell/residential/house/8088375)

Type : House
Land Size : 880 sqm
View : <https://www.areal.com.au/lease/vic/-/camberwell/residential/house/8088375>



Sabrina El-hares
 03 9818 8991

7 Lesley Street, Camberwell



Disclaimer: Information provided is believed to be accurate as at the date of printing, no responsibility is taken for any errors or omissions. It is your responsibility to obtain independent professional advice. Personal information collected from you is for security purposes and to contact you should the property sell prior to auction. We may use this information to provide you with other real estate services including referrals to authorised financial services providers. Visit our website at www.marshallwhite.com.au for our privacy policy.

7 Lesley Street, Camberwell



Disclaimer: Information provided is believed to be accurate as at the date of printing, no responsibility is taken for any errors or omissions. It is your responsibility to obtain independent professional advice. Personal information collected from you is for security purposes and to contact you should the property sell prior to auction. We may use this information to provide you with other real estate services including referrals to authorised financial services providers. Visit our website at www.marshallwhite.com.au for our privacy policy.