

209/1 Lygon Street Brunswick East VIC

1 1

Scheduling your property inspection is now a breeze! Simply click on the "Book an Inspection" or "Request a Time" button to secure your appointment. You'll instantly receive a confirmation and be kept up-to-date with any alterations or cancellations concerning your scheduled visit. Please be aware, inspections may be subject to cancellation if no bookings are registered. Make your booking today and take the first step in finding your ideal home

Discover unparalleled urban living in Melbourne's sought-after locale with this exquisite one-bedroom apartment, blending modern elegance with unmatched convenience.

[For full version visit the website](https://www.areal.com.au/lease/vic/north/brunswick-east/residential/apartment/8085057)

Type : Apartment

View : <https://www.areal.com.au/lease/vic/north/brunswick-east/residential/apartment/8085057>



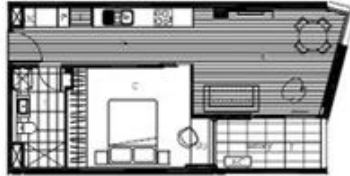
Sylvia Hao
03 9818 8991



onelygon

209

Level: 2
 No of bedrooms: 1
 No of bathrooms: 1
 Floor Area: 50.0m²
 Open Space: 8.1 m²
 Total Area: 58.1m²



WARDROBE
STORAGE SYSTEM



Dimensions and areas are approximate and are subject to change without notice. Internal measurements are taken from the face of walls and doors, and do not include the thickness of the outside wall. Prospective purchasers must rely on their own enquiries and should refer to the plans, terms and conditions contained in the contract of sale. Some furniture and goods are optional and not included. Furniture shown is for illustrative purposes only. All measurements are in metres. All measurements are approximate and for illustrative purposes only. We make no guarantee of the accuracy of the plan, and you should independently determine the suitability of the property for your requirements.



All measurements are in metres. This plan is not to scale and provided as marketing material. All measurements are approximate and for illustrative purposes only. We make no guarantee of the accuracy of the plan, and you should independently determine the suitability of the property for your requirements.