



18 Rogers Close Berwick VIC

4 2 2

Feel like you're buying a brand-new home in one of Berwick's most enviable locations. This remarkable single-level property epitomises luxury living, boasting the finest quality finishes meticulously curated to offer an unparalleled residential experience. Upon entering, you're embraced by a blend of contemporary design and comfort, immediately establishing the ambiance that permeates throughout the entire home.

Featuring 4 spacious bedrooms, each adorned with BIRs, including a master bedroom being a sanctuary unto itself (complete with a lavish ensuite and walk-in robe), ensuring a private retreat for relaxation, plus a stylish family bathroom.

At the heart of the home you will find a modern stone

Price : \$ 775,500

Land Size : 401 sqm

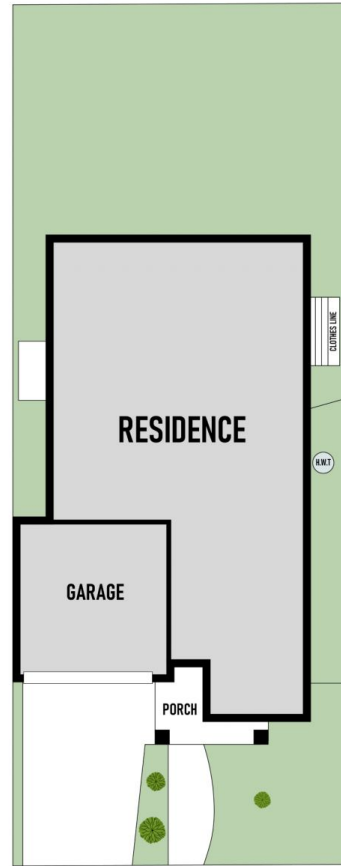
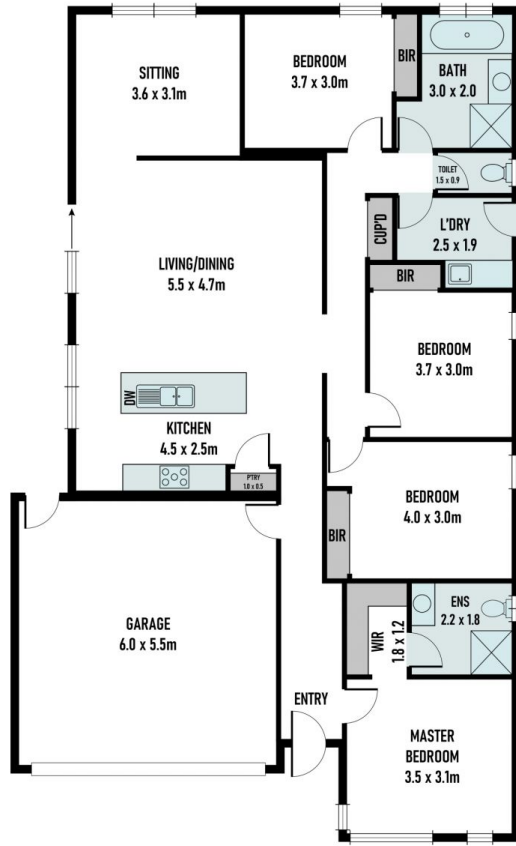
View : <https://www.areal.com.au/sale/vic/south-east/berwick/residential/house/8008732>



Dave Tang
03 8686 8388



Andy Yuan
03 8686 8388



A/REAL

Scale in metres. Indicative only. All information contained herein is obtained from sources we believe to be accurate. We cannot guarantee its accuracy. You should make and rely on your own enquiries.

