



211/119 Poath Road Murrumbeena VIC

2 2 1

Discover luxurious urban living at its finest in this immaculate two-bedroom, two-bathroom unit located at 211/119 Poath Road, Murrumbeena. Nestled in the heart of Hughesdale Village, this property offers the perfect fusion of convenience and sophistication.

As you step inside, you'll be greeted by a beautifully presented open-plan living area that seamlessly extends to a generous entertainer's balcony, providing serene leafy views over the rooftops. This space is perfect for hosting gatherings or simply relaxing after a long day.

Both bedrooms feature built-in mirrored robes, with the master bedroom boasting an ensuite for your convenience.

[For full version visit the website](https://www.areal.com.au)

Type : Apartment

Price : \$ 545,000

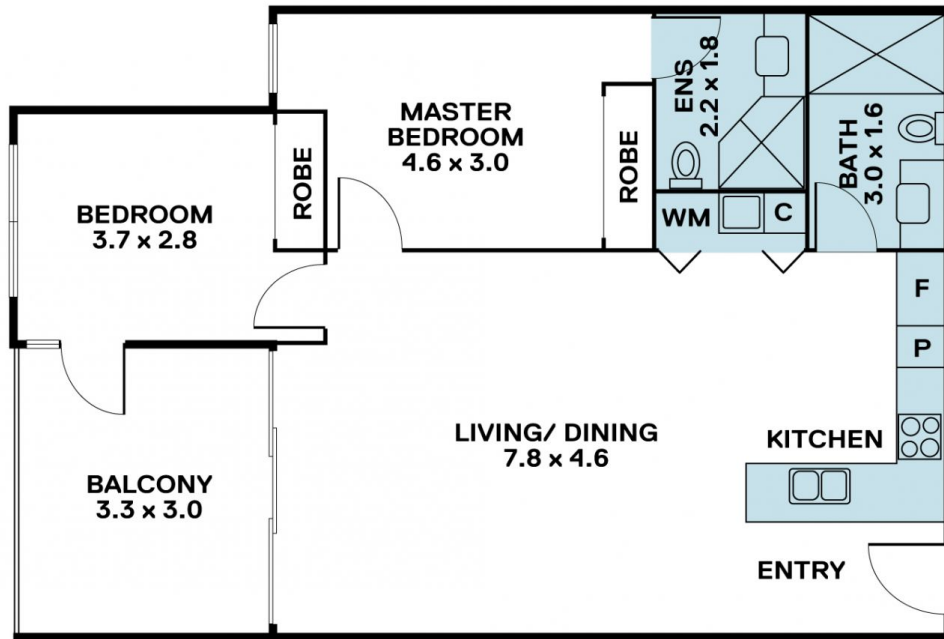
View : <https://www.areal.com.au/sale/vic/east/murrumbeena/residential/apartment/7955745>



Dave Tang
03 8686 8388



Andy Yuan
03 8686 8388



INTERNAL : 77m²
 EXTERNAL : 10m²
 TOTAL AREA : 87m²

A/REAL

Disclaimer "Scale in metres. Indicative only. All information contained herein is obtained from sources we believe to be accurate. We cannot guarantee its accuracy. You should make and rely on your own enquiries."

