



1010/8 Grosvenor Street Abbotsford VIC

2 2 1

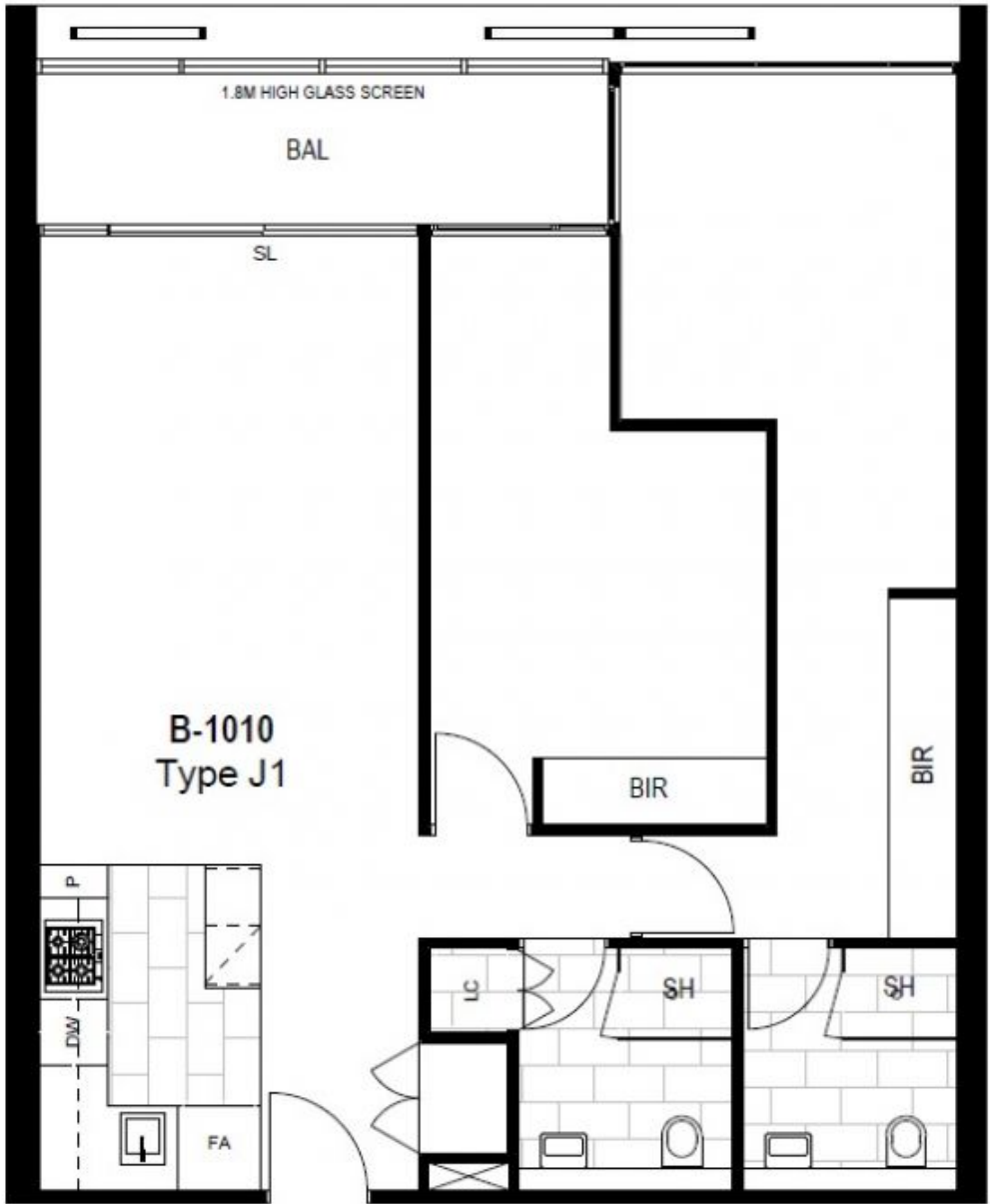
\*\*Scheduling your property inspection is now a breeze! Simply click on the "Book an Inspection" or "Request a Time" button to secure your appointment. You'll instantly receive a confirmation and be kept up-to-date with any alterations or cancellations concerning your scheduled visit. Please be aware, inspections may be subject to cancellation if no bookings are registered. Make your booking today and take the first step in finding your ideal home\*\*

As a tenant of Precinct you will enjoy the use of a communal gym, pool and 3 x communal outdoor areas, all conveniently located on site and walking distance to Victoria gardens with a Cinema, Ikea and Supermarkets including Aldi.

**View :** <https://www.areal.com.au/lease/vic/inner-city/abbotsford/residential/apartment/7931387>



**Joshua Hellyer**  
03 91165797



B-1010  
Type J1

LEGEND

- SL SLIDING DOOR
- FA FRIDGE ALCOVE
- DW DISHWASHER
- P PANTRY
- LC LAUNDRY CLOSET
- BIR BUILT IN ROBES
- SH SHOWER
- BAL BALCONY
- HL HIGHLIGHT WINDOW