



424 Tooronga Road Hawthorn East VIC

3 1 2

This residence, built in 1930, exudes the timeless charm of its era. This home beautifully encapsulates the elegance of its original construction, featuring ornate ceilings, polished timber floors, high ceilings period-style picture railing and an ornamental feature fireplace.

With a generous land size, this property offers immense potential for renovation, extension, or redevelopment possibilities (STCA). The canvas is yours to create your dream home.

- Plans for 4 townhouses development (Endorsed by council)
- Valid Planning Permit until 2025
- Multiple development and subdivide options (STCA) - 2 townhouses, 4 townhouses or 1 large family home

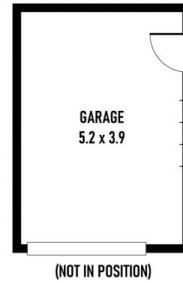
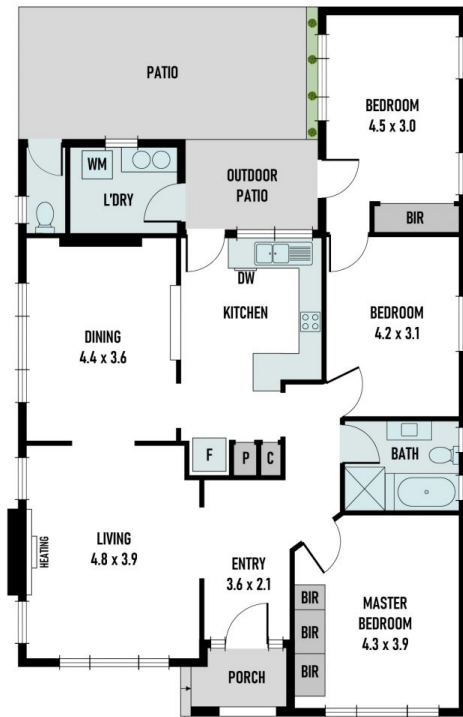
Land Size : 711 sqm
View : <https://www.areal.com.au/sale/vic/east/hawthorn-east/residential/house/7907596>



Radek Skorupski
 03 9818 8991



Jason Xi
 03 9818 8991



A/REAL

Scale in metres. Indicative only. All information contained herein is obtained from sources we believe to be accurate. We cannot guarantee its accuracy. You should make and rely on your own enquiries.

