



## 20 Penelope Close Cranbourne North VIC

4 2 2

Designed to deliver the ultimate in luxurious single-level living, this stunning residence is sure to impress the most discerning buyer.

A captivating sense of space and natural light create a spectacular impact throughout dual-zoned living, providing plenty of room for relaxation, privacy and entertainment. Timber floors enhance an open-plan family/meals area, striking kitchen featuring ample storage, stone surfaces and stainless-steel appliances, plus a sun-soaked living room.

4 robed bedrooms include a master with twin-vanity ensuite, and are complemented by a deluxe family bathroom, heating/AC, walk-in pantry and double garage.

**Price** : \$ 715,000

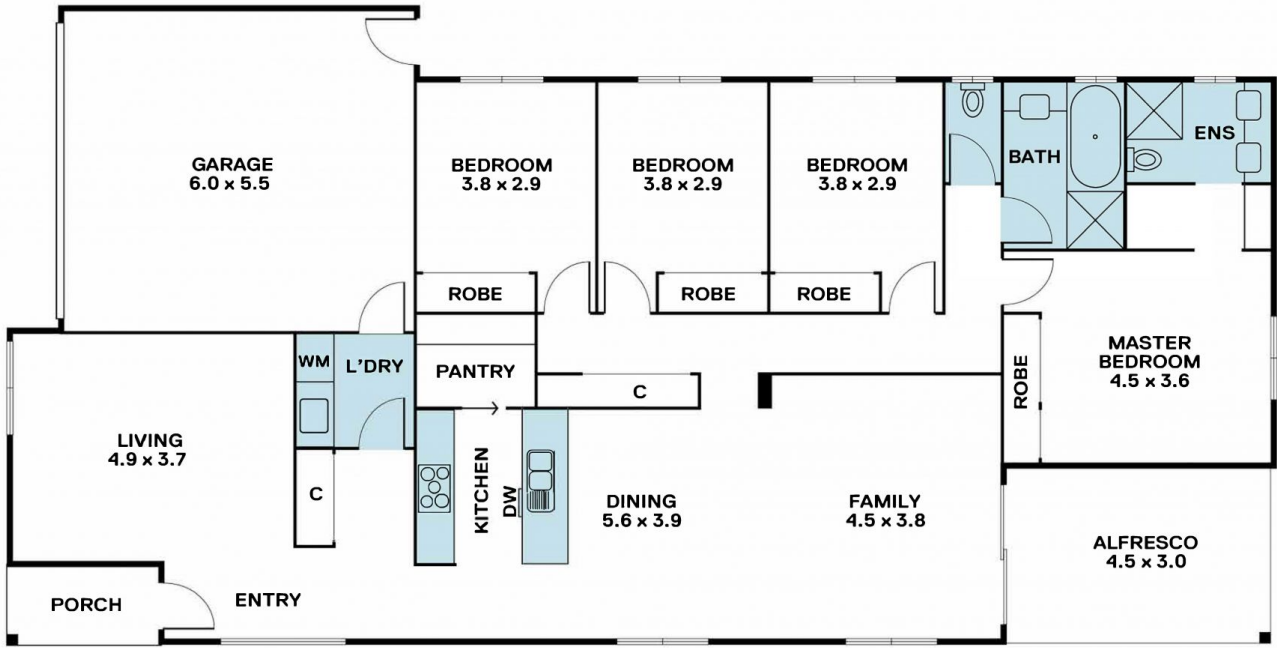
**View** : <https://www.areal.com.au/sale/vic/south-east/cranbourne-north/residential/house/7904489>



**Dave Tang**  
03 8686 8388



**Andy Yuan**  
03 8686 8388



Disclaimer "Scale in metres. Indicative only. All information contained herein is obtained from sources we believe to be accurate. We cannot guarantee its accuracy. You should make and rely on your own enquiries."

