



G06/10 Bromham Place Richmond VIC

2 2 1

****Scheduling your property inspection is now a breeze!** Simply click on the "Book an Inspection" or "Request a Time" button to secure your appointment. You'll instantly receive a confirmation and be kept up-to-date with any alterations or cancellations concerning your scheduled visit. Please be aware, inspections may be subject to cancellation if no bookings are registered. Make your booking today and take the first step in finding your ideal home**

A spacious two-bedroom apartment, featuring stylish hardwood timber flooring and ample storage space. The air-conditioned living space is well designed with glass sliding doors opening to your own private balcony creating

Type : Apartment

View : <https://www.areal.com.au/lease/vic/inner-city/richmond/residential/apartment/7860559>



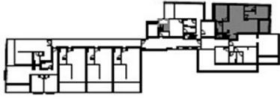
Joseph Wong
03 9818 8991

[For full version visit the website](https://www.areal.com.au)

2 BED, 2 BATH

Total Area	91.0 m ²
Int Area	83.5 m ²
Ext Area	7.5 m ²

KEYPLAN



A/REAL