



1206/25 Waterfront Way Docklands VIC

2 1

****Scheduling your property inspection is now a breeze!** Simply click on the "Book an Inspection" or "Request a Time" button to secure your appointment. You'll instantly receive a confirmation and be kept up-to-date with any alterations or cancellations concerning your scheduled visit. Please be aware, inspections may be subject to cancellation if no bookings are registered. Make your booking today and take the first step in finding your ideal home**

A contemporary and sophisticated two-bedroom apartment available for lease. This modern residence, complete with a study/enclosed balcony, is ideally located in the heart of Docklands, offering easy access to the waterfront, dining,

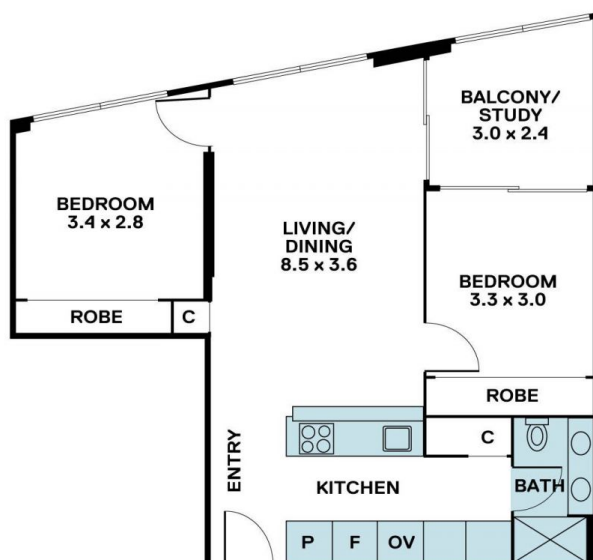
Type : Apartment

View : <https://www.areal.com.au/lease/vic/inner-city/docklands/residential/apartment/7849266>



Edmund Li
03 9818 8991

[For full version visit the website](https://www.areal.com.au)



A/REAL

Disclaimer "Scale in metres. Indicative only. All information contained herein is obtained from sources we believe to be accurate. We cannot guarantee its accuracy. You should make and rely on your own enquiries."

► N