



## 2/9 Tarella Drive Mount Waverley VIC

4 3 2

Your tranquil lifestyle begins here! Situated in a quiet cul-de-sac, this spacious 3 bedroom townhouse with a sunlit study and polished hardwood floors is this Mount Waverley gem. Entertain on the timber-decked patio, enjoy a sleek kitchen, and relax in the master bedroom with an ensuite. With ducted air conditioning, low-maintenance gardens, a double garage, and proximity to schools and shops, this home offers convenience and elegance.

Upon entering, you'll be captivated by the polished hardwood floors that flow seamlessly throughout the home kept comfortable year-round by ducted air conditioning. The sunlit study, positioned at the front, offers a private space for work or relaxation, separate from the main living area. The spacious living zone opens to a timber-decked patio, perfect for alfresco dining and entertaining.

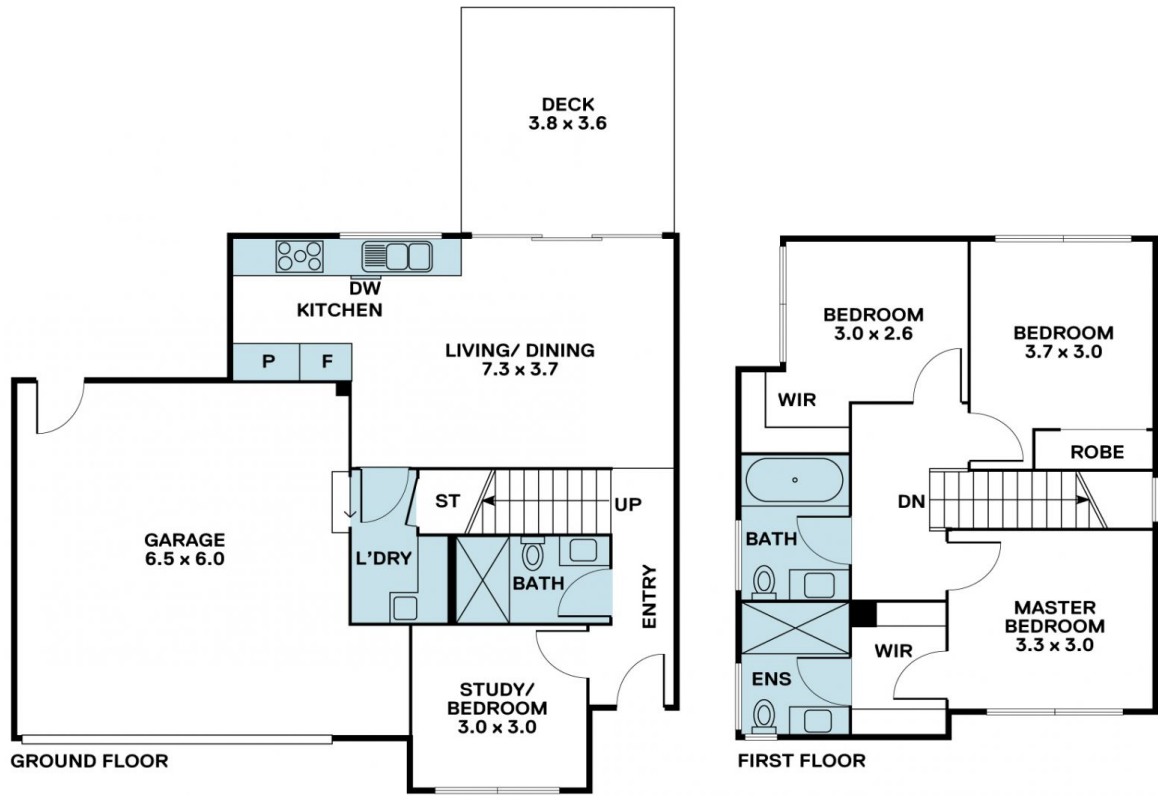
**View :** <https://www.areal.com.au/sale/vic/east/mount-waverley/residential/townhouse/7735284>



**Linda Pan**  
03 8686 8388



**William Shen**  
03 8686 8388



Disclaimer "Scale in metres. Indicative only. All information contained herein is obtained from sources we believe to be accurate. We cannot guarantee its accuracy. You should make and rely on your own enquiries."

