



42 Ellsworth Crescent Camberwell VIC

4 2 2

The impressive ultra-modern exterior of this four-bedroom, three-bathroom family home is just one of the many reasons you will love living at this address! You can stroll to Lynden Park, Wattle Park Golf Course and the tram and everything you need is nearby.

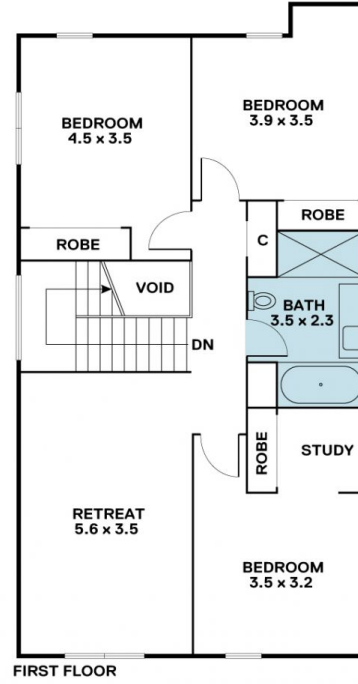
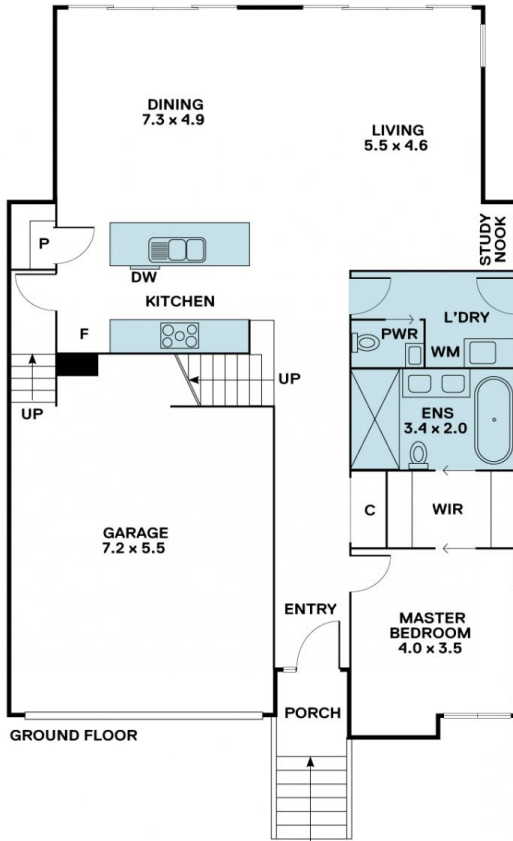
Price : \$ 1,918,888

View : <https://www.areal.com.au/sale/vic/east/camberwell/residential/house/7735249>

The sophisticated interior has a timeless neutral colour scheme with a stunning gourmet kitchen in the heart of the open-plan layout. It has a stone top breakfast bar for gathering for quick meals. You'll love the handleless cabinets and the quality stainless-steel Miele appliances. The living area extends out from the dining and the lounge through sliding doors to a paved courtyard and backyard - perfect for entertaining guests. There's also a powder room and laundry on the main level for convenience.



Linda Pan
03 8686 8388



Disclaimer "Scale in metres. Indicative only. All information contained herein is obtained from sources we believe to be accurate. We cannot guarantee its accuracy. You should make and rely on your own enquiries."

