

2A/9 Waterside Place Docklands VIC

2 🛏 2 🚿 1 🚗

Set right in the heart of Docklands, just a short stroll from all that the city of Melbourne has to offer, is this modern and open-plan two-bedroom apartment. Boasting spectacular water views, a light-filled and spacious layout and sought-after location, this property is sure to attract the attention of a wide range of property buyers.

The spacious living room will be the heart of the home as it features floor-to-ceiling windows that frame the city and water views whilst also allowing an abundance of natural light to filter in. From here you can access the private balcony that will be the perfect spot to enjoy the refreshing breezes as you sip on your morning coffee or dine alfresco.

Type : Apartment

Price : \$ 660,000

View : <https://www.areal.com.au/sale/vic/inner-city/docklands/residential/apartment/7735246>



William Shen
03 8686 8388

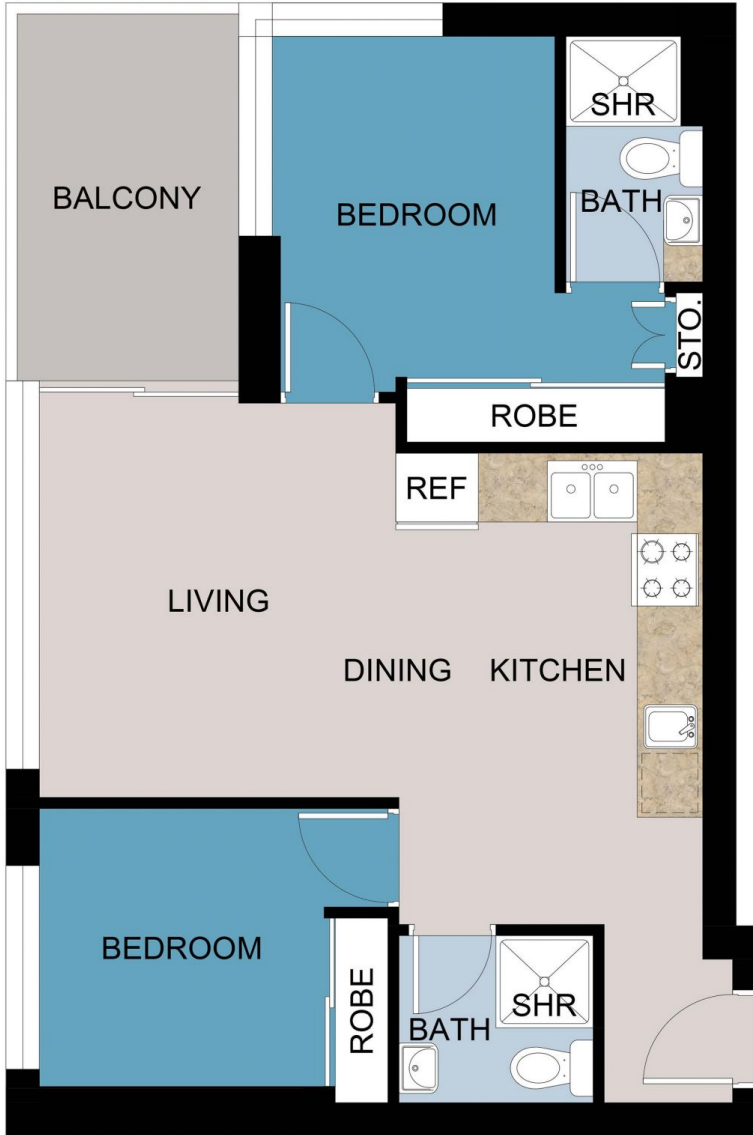


Dave Tang
03 8686 8388

[For full version visit the website](https://www.areal.com.au)

STORAGE CAGE

CARPORT
(NOT IN POSITION)



FLOOR PLAN

DISCLAIMER

PLANS SHOWN ARE FOR MARKETING PURPOSES ONLY, ALL DIMENSIONS ARE APPROXIMATE AND NOT TO SCALE. THEY ARE SUBJECT TO ERRORS AND INACCURACIES AND NO LIABILITY WILL BE ACCEPTED. INTERESTED PARTIES SHOULD MAKE THEIR OWN INQUIRIES.

