



1401/33 Rose Lane Melbourne VIC

1 1

Towering above the bustling streets on the 14th floor, this stylish one-bedroom apartment in the heart of Melbourne offers a great CBD address and a relaxed urban lifestyle! Located in the luxurious 'Manhattan Tower', this well-appointed home boasts an entertainer's balcony with gleaming views of the city. This enviable location offers the best restaurants, convenient shopping and multiple transport options right at the door with Southern Cross Station situated directly opposite.

This beautifully designed home has a sophisticated and practical open-plan layout, stone bench tops, quality appliances and a fully tiled bathroom. Your year-round comfort is assured with double-glazed windows and

[For full version visit the website](https://www.areal.com.au)

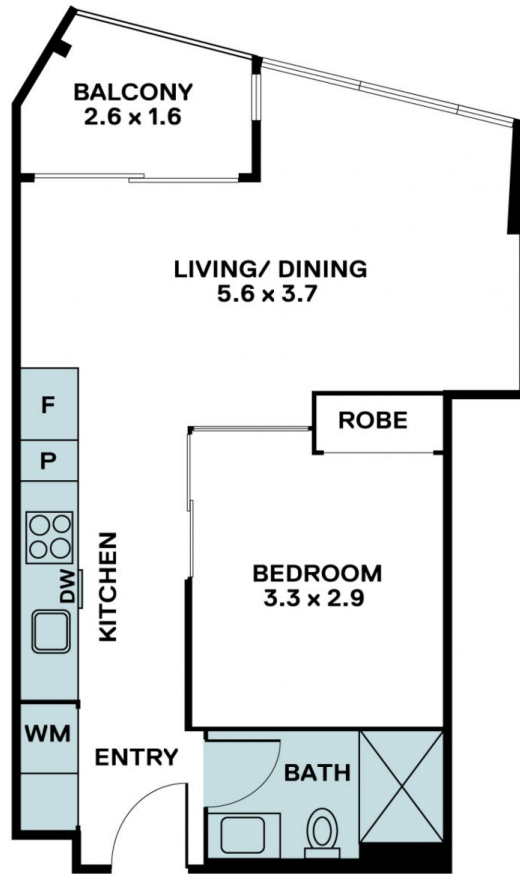
Type : Apartment
Price : \$ 330,000
Building Size : 51 sqm
View : <https://www.areal.com.au/sale/vic/inner-city/melbourne/residential/apartment/7735241>



Radek Skorupski
03 9818 8991



Andy Yuan
03 8686 8388



Internal: 44 m²
 External: 4 m²
 Total Area: 48 m²



A/REAL

Disclaimer "Scale in metres. Indicative only. All information contained herein is obtained from sources we believe to be accurate. We cannot guarantee its accuracy. You should make and rely on your own enquiries."