



310/20 Camberwell Road Hawthorn East VIC

2 1 1

Located in the LEO building in the heart of Hawthorne, this two-bedroom apartment, one bathroom will impress with its contemporary styling, low-maintenance lifestyle, and excellent location. Located just metres from Burwood Road shopping and Auburn station you'll have everything you need right at your doorstep.

This fresh and sophisticated unit has quality fittings throughout and a large balcony to take in the city lights by night and the bustling streets below by day. There's air conditioning to provide comfort year-round with beautiful broad-panel timber floors, plus carpet in the bedroom and a contemporary light-filled living space.

Type : Apartment

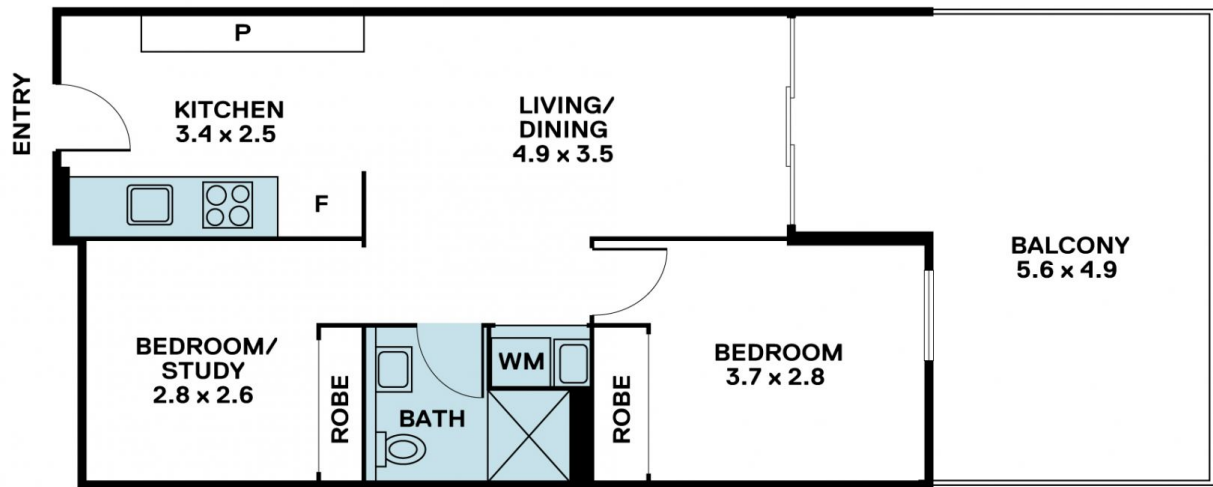
Price : \$ 473,000

View : <https://www.arel.com.au/sale/vic/east/hawthorn-east/residential/apartment/7735237>



Andy Yuan
03 8686 8388

[For full version visit the website](#)



A/REAL

Disclaimer "Scale in metres. Indicative only. All information contained herein is obtained from sources we believe to be accurate. We cannot guarantee its accuracy. You should make and rely on your own enquiries."

