



## 15 Grasmere Court Wantirna VIC

4 2 2

Dressed to impress with beautifully renovated spaces and a light-filled interior that connects with outdoor entertaining, this superb home represents the perfect family haven in the Templeton Primary Zone.

Pristine polished floorboards span throughout the lounge and dining room and offer a natural sense of warmth and style, whilst reflecting the glow of sunlight throughout the front of the home.

Renovated to deliver an uplifting ambience, the kitchen and meals/family room is enriched with sparkling stone benches, Euromaid freestanding oven/stove, Bellini dishwasher, glass splashbacks plus a breakfast bench,

[For full version visit the website](https://www.arel.com.au/sale/vic/east/wantirna/residential/house/7735221)

**Type** : House

**Price** : \$ 1,230,000

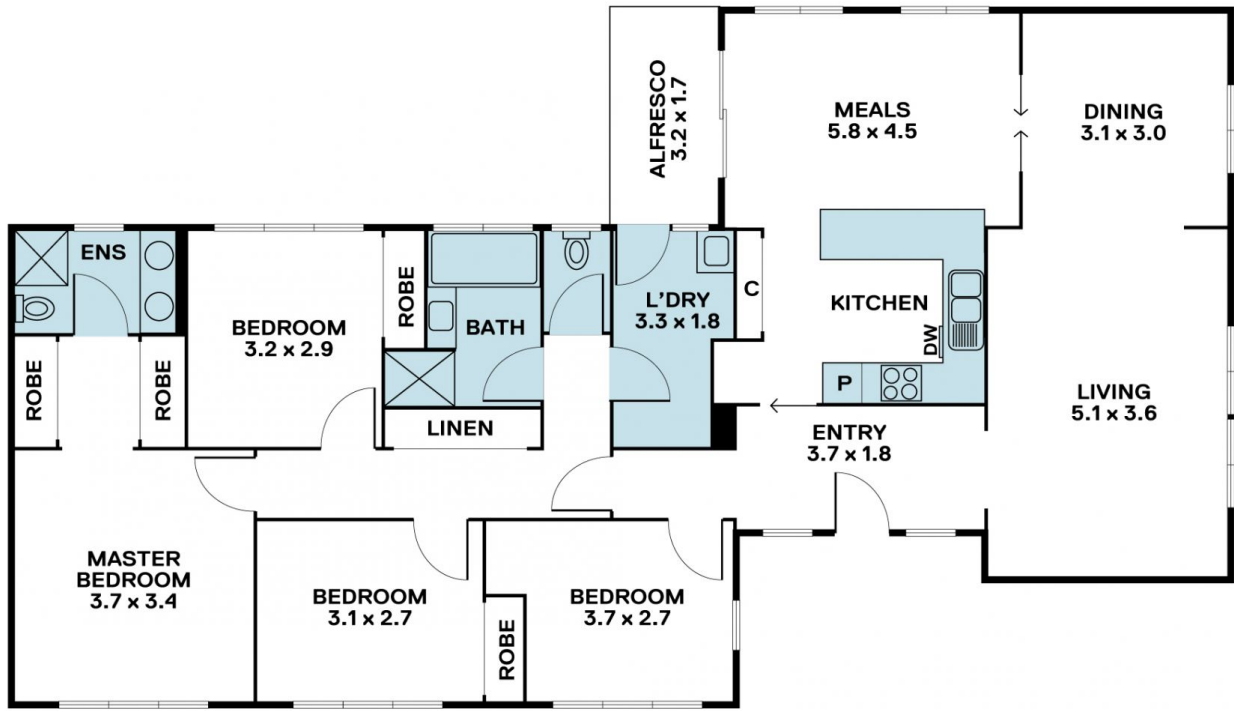
**View** : <https://www.arel.com.au/sale/vic/east/wantirna/residential/house/7735221>



**Linda Pan**  
03 8686 8388



**William Shen**  
03 8686 8388



Disclaimer "Scale in metres. Indicative only. All information contained herein is obtained from sources we believe to be accurate. We cannot guarantee its accuracy. You should make and rely on your own enquiries."

