



## 149 Wheelers Park Drive Cranbourne North VIC

4 2 2

Welcome to 149 Wheelers Park Drive, a modern and easy-care family home that offers a life of comfort, ease and convenience to those who call it home.

Daily life is sure to centre around the open-plan kitchen, dining and family area that feature stunning timber flooring underfoot, crisp white walls and an abundance of natural light.

The modern kitchen boasts a 900mm gas cooktop and oven, a dishwasher, a walk-in pantry and a breakfast bar. From this open-plan living space you can access the covered patio that invites you to dine alfresco, as you watch the kids and pets play on the grass in the fully

**Type** : House  
**Price** : \$ 660,000  
**Land Size** : 407 sqm  
**View** : <https://www.areal.com.au/sale/vic/south-east/cranbourne-north/residential/house/7735198>

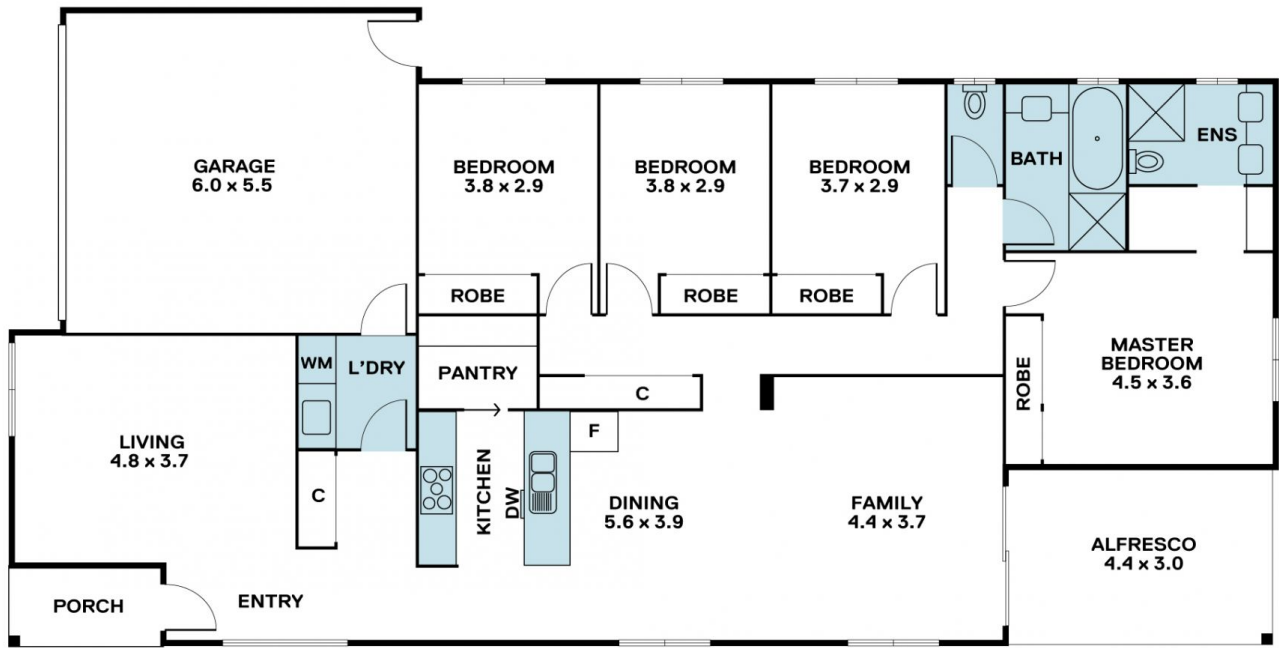
[For full version visit the website](https://www.areal.com.au)



**Linda Pan**  
03 8686 8388



**Dave Tang**  
03 8686 8388



**A/REAL**

Disclaimer "Scale in metres. Indicative only. All information contained herein is obtained from sources we believe to be accurate. We cannot guarantee its accuracy. You should make and rely on your own enquiries."

