



21 Woodward Way Caroline Springs VIC

5 🛏 3 🚗 2 🚗

An exclusive cul de sac within one of Caroline Spring's stunning suburban pockets sets the scene for this sprawling family home; supplying outstanding space and entertaining within a low maintenance setting.

- The Fabulous Living Area are so beautifully designed that the living room, kitchen and family room all flow easily through wide double doors to the huge paved alfresco & Designer Garden Spaces.
- Discover two formal lounge, separate dining/recreation room plus a master bedroom.
- Open plan living is effortlessly executed in the expansive family and meals area; incorporating a fully equipped kitchen and boasting a seamless transition to outside.
- Primed for year-round entertaining and relaxation, a private covered alfresco rests amid easy-care gardens.

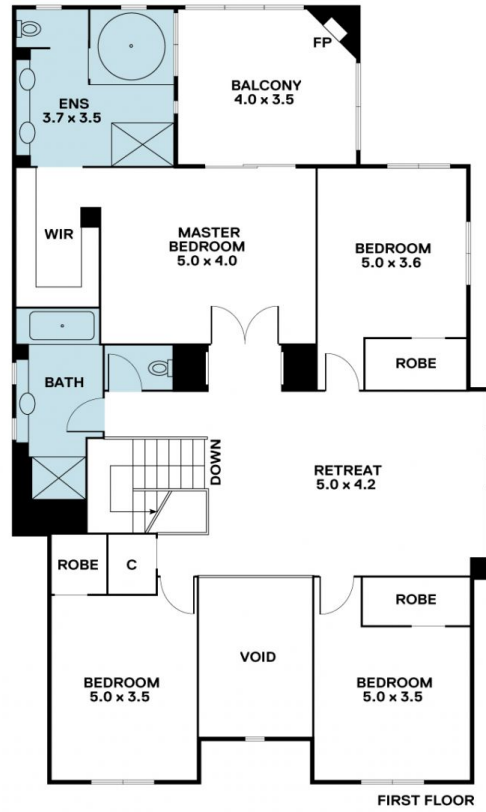
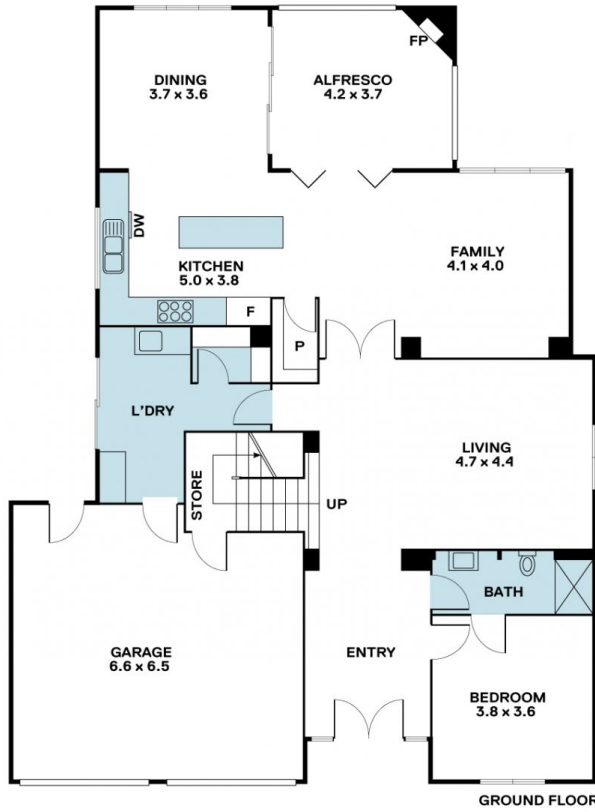
Building Size : 335 sqm
Land Size : 609 sqm
View : <https://www.arel.com.au/sale/vic/west/caroline-springs/residential/house/7735179>



Dennis Shi
03 8686 8388



Stefano Lai
03 8686 8388



A/REAL

Disclaimer "Scale in metres. Indicative only. All information contained herein is obtained from sources we believe to be accurate. We cannot guarantee its accuracy. You should make and rely on your own enquiries."

