



## 175 Westwood Boulevard Keysborough VIC

4 2 2

From growing families and first home-buyers to eagle-eyed investors searching for quality stock in a popular location, there will be no shortage of buyers vying for this modern double storey home. You will live just down the street from Cherryfield Park with a playground for the kids and expanses of space to walk the family pet while shops, schools, major roads and even the beach are all within easy reach.

Set behind the contemporary facade is a floorplan that has been crafted for a comfortable and spacious lifestyle. There's room to gather with friends in the open-plan kitchen, dining and living room or you can retreat to the separate family room and enjoy a movie night with loved

[For full version visit the website](https://www.areal.com.au)

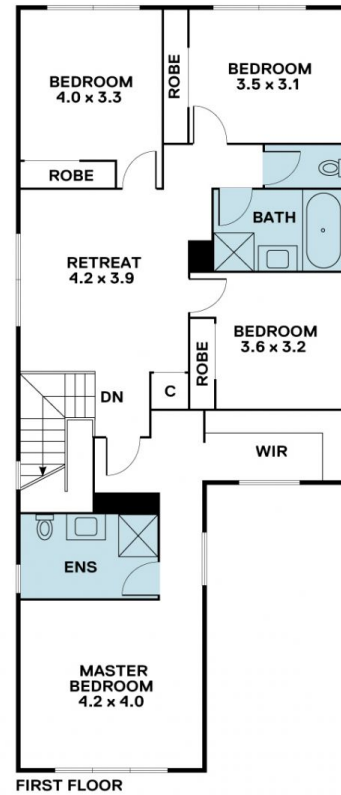
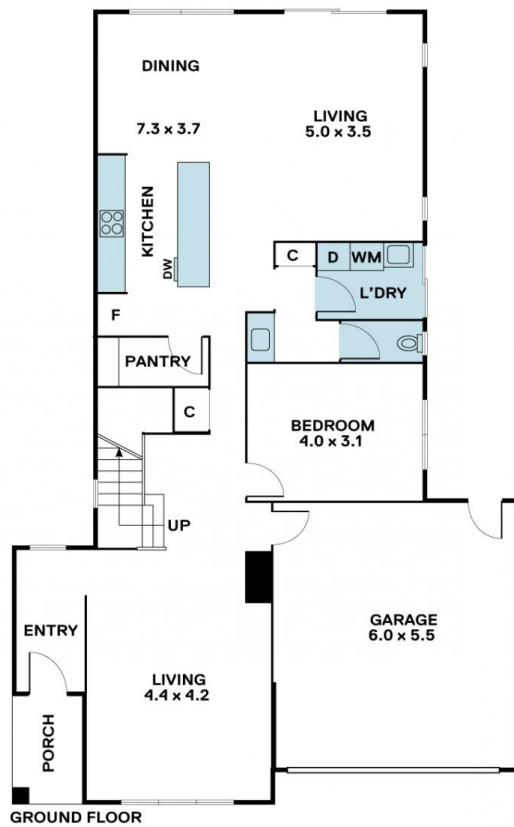
**Type** : House  
**Price** : \$ 1,198,888  
**Land Size** : 458 sqm  
**View** : <https://www.areal.com.au/sale/vic/south-east/keysborough/residential/house/7735170>



**Linda Pan**  
03 8686 8388



**William Shen**  
03 8686 8388



**A/REAL**

Disclaimer "Scale in metres. Indicative only. All information contained herein is obtained from sources we believe to be accurate. We cannot guarantee its accuracy. You should make and rely on your own enquiries."

