



## 1 Kalonga Court Glen Waverley VIC

4 3 2

Dreaming of a modern, stylish and spacious family haven that you'll be proud to call home? This remarkable residence offers the very best in contemporary living and is set on an enviable corner lot within a prized pocket of Glen Waverley.

The two-storey layout will tick every box on your ultimate property wishlist with something for everyone in the family.

The heart of the home will surely be the open-plan and light-filled kitchen, dining and living room with gleaming timber floors, large windows and direct access to the deck. This effortless indoor-outdoor connection will appeal to anyone who loves to entertain as will the sleek chef's

**Type** : House

**Price** : \$ 1,439,000

**View** : <https://www.areal.com.au/sale/vic/east/glen-wave/7735108>

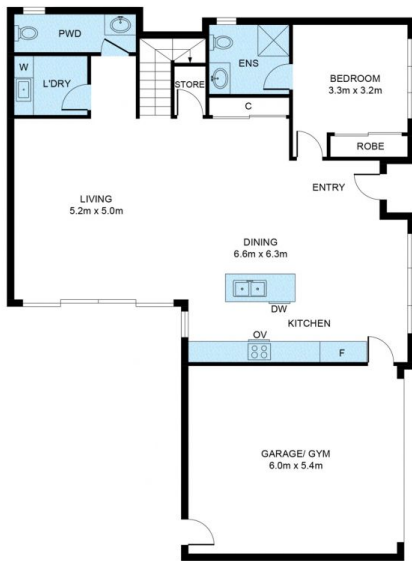


**Linda Pan**  
03 8686 8388



**William Shen**  
03 8686 8388

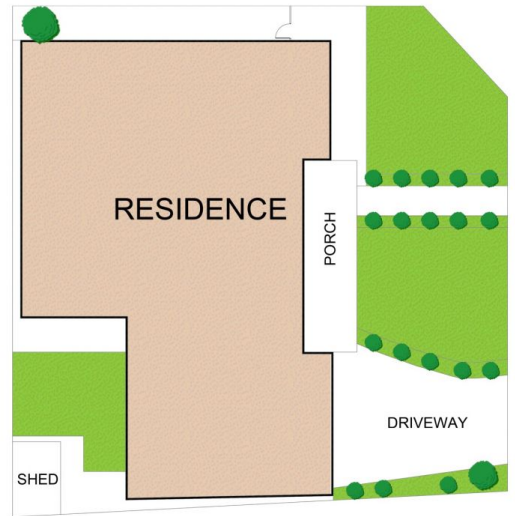
[For full version visit the website](https://www.areal.com.au)



GROUND FLOOR



FIRST FLOOR



**eReal**

Disclaimer "Scale in metres. Indicative only. All information contained herein is obtained from sources we believe to be accurate. We cannot guarantee its accuracy. You should make and rely on your own enquiries."

