



2507/65 Dudley Street West Melbourne VIC

1 1

Designed with sleek modern living in mind, this stunning West Melbourne apartment presents an exciting opportunity for both owner-occupiers and investors alike.

Whether you choose to bolster your portfolio and offer the unit for rent or keep this impressive abode for yourself, you are sure to adore the central location close to everything you could ever need. Flagstaff Gardens, public transport links, cool cafes and restaurants are all conveniently located at your fingertips and you're also close to Marvel Stadium, Docklands and the Melbourne CBD.

Walls of glass draw in an abundance of natural light illuminating the open-plan kitchen, living and dining area.

[For full version visit the website](https://www.areal.com.au)

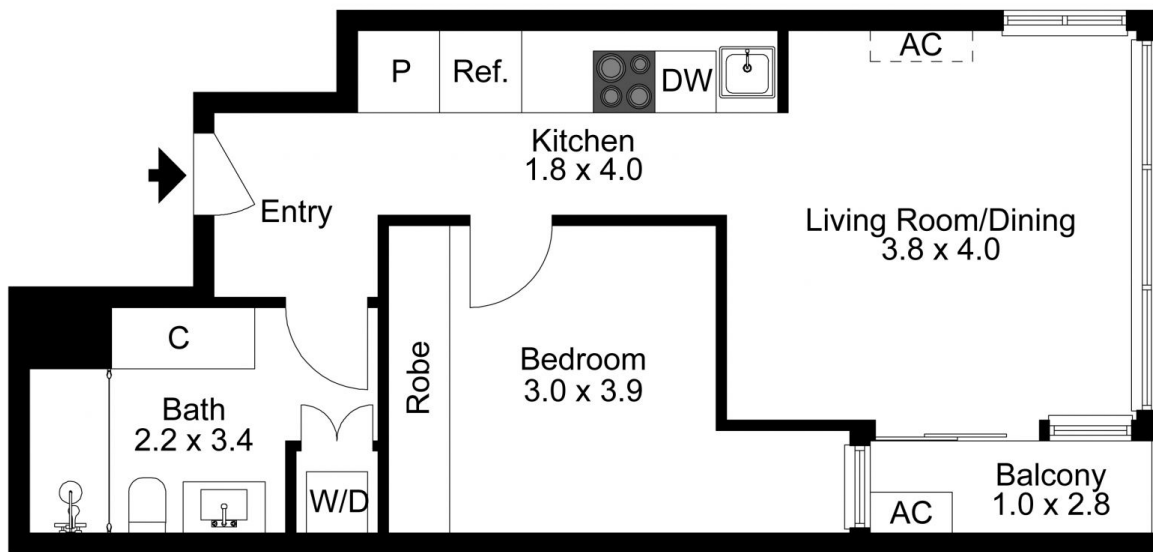
Type : Apartment

Price : \$ 330,000

View : <https://www.areal.com.au/sale/vic/inner-city/west-melbourne/residential/apartment/7735073>

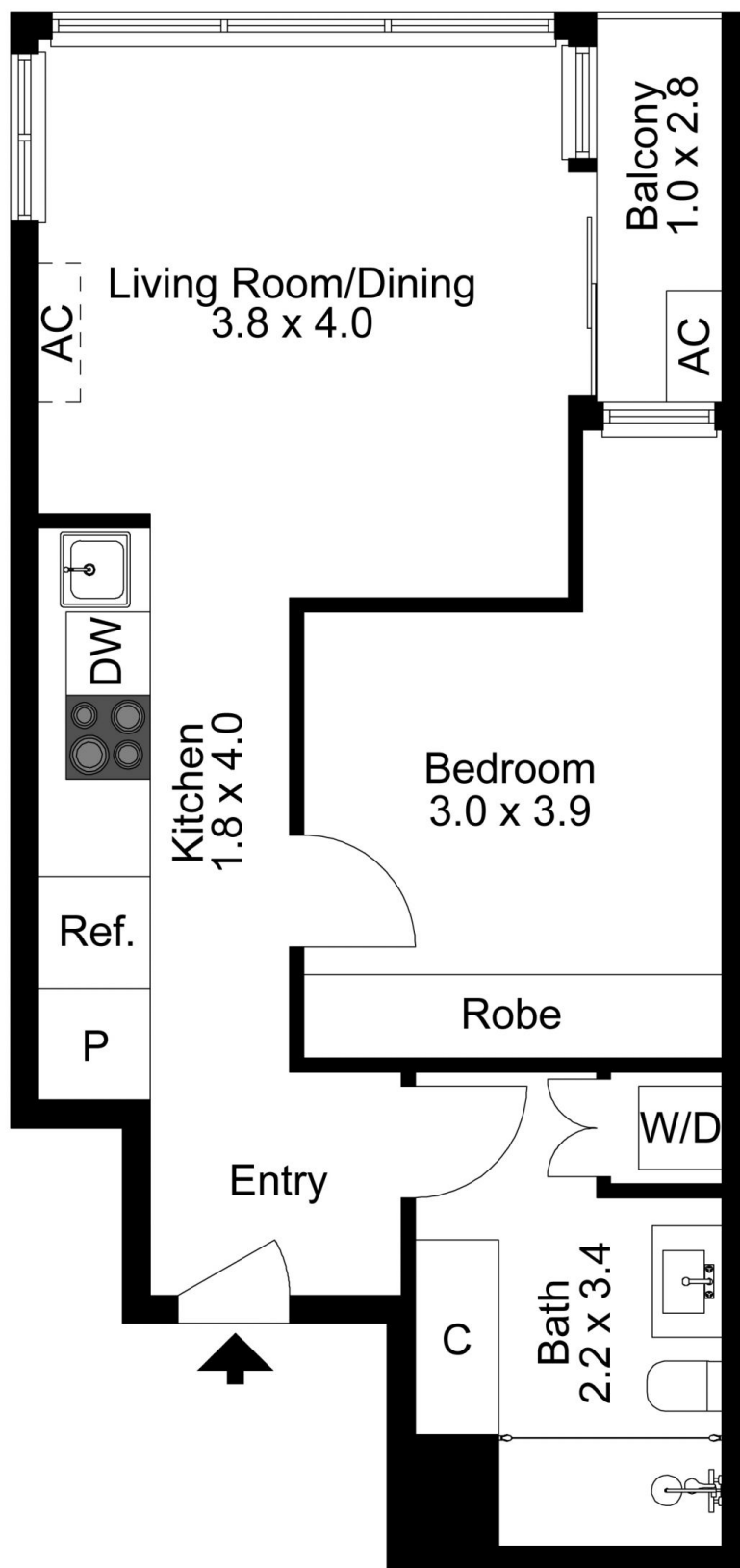


Andy Yuan
03 8686 8388



The floor plan is not to scale; measurements are indicative and in metres. Exterior elements are not in position.
Plans should not be relied on. Interested parties should make and rely on their own enquiries.





The floor plan is not to scale; measurements are indicative and in metres. Exterior elements are not in position.
Plans should not be relied on. Interested parties should make and rely on their own enquiries.