



212 Clarendon Drive Keysborough VIC

4 2 2

Big, bold and beautifully presented, this stunning family home will surely take your breath away. Standing proud on an enviable corner lot, the lucky new owners of 212 Clarendon Drive will enjoy room to move and play along with a central location across from a picturesque reserve.

You are spoiled for choice when it comes to space with a show-stopping layout that boasts a light-filled living room, an upper-level rumpus and a main-floor, open-plan kitchen, dining and family room. If cooking is a passion, you are set to love the large centre island and stainless steel appliances plus there's breakfast bar seating and a generous walk-in pantry.

Type : House
Price : \$ 1,200,000
Land Size : 507 sqm
View : <https://www.areal.com.au/sale/vic/south-east/keysborough/residential/house/7735059>

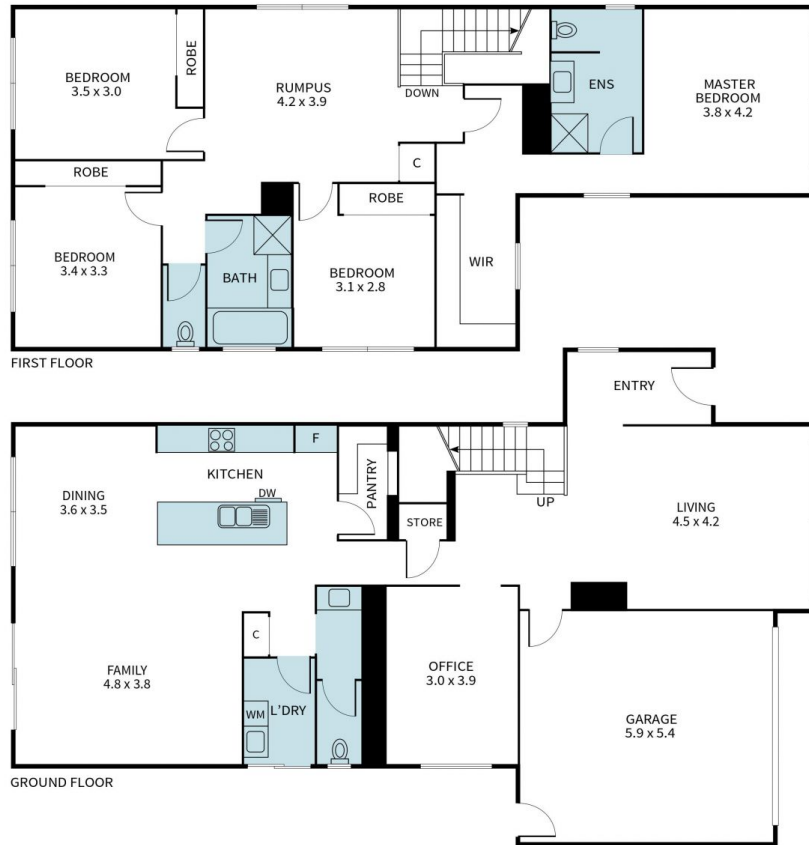
[For full version visit the website](https://www.areal.com.au)



Linda Pan
03 8686 8388



William Shen
03 8686 8388



Disclaimer "Scale in metres. Indicative only. All information contained herein is obtained from sources we believe to be accurate. We cannot guarantee its accuracy. You should make and rely on your own enquiries."

