



## 19 Vestley Drive Mernda VIC

4 2 2

As the lucky new owners of 19 Vestley Drive, you will live on a prized corner lot within a family-friendly pocket of Mernda. You can walk just around the corner to the picturesque Neptune Park while bus stops, shops, schools and a long list of must-have amenities are all only moments from your front door.

All four bedrooms run neatly along one side of the home including your master suite with a walk-in robe, an ensuite and views over the front yard. Bedrooms two, three and four all have built-in robes and are serviced by the main bathroom complete with a separate bath, shower and toilet for absolute convenience.

**Type** : House

**Price** : \$ 671,500

**View** : <https://www.areal.com.au/sale/vic/north-east/mernda/residential/house/7735036>

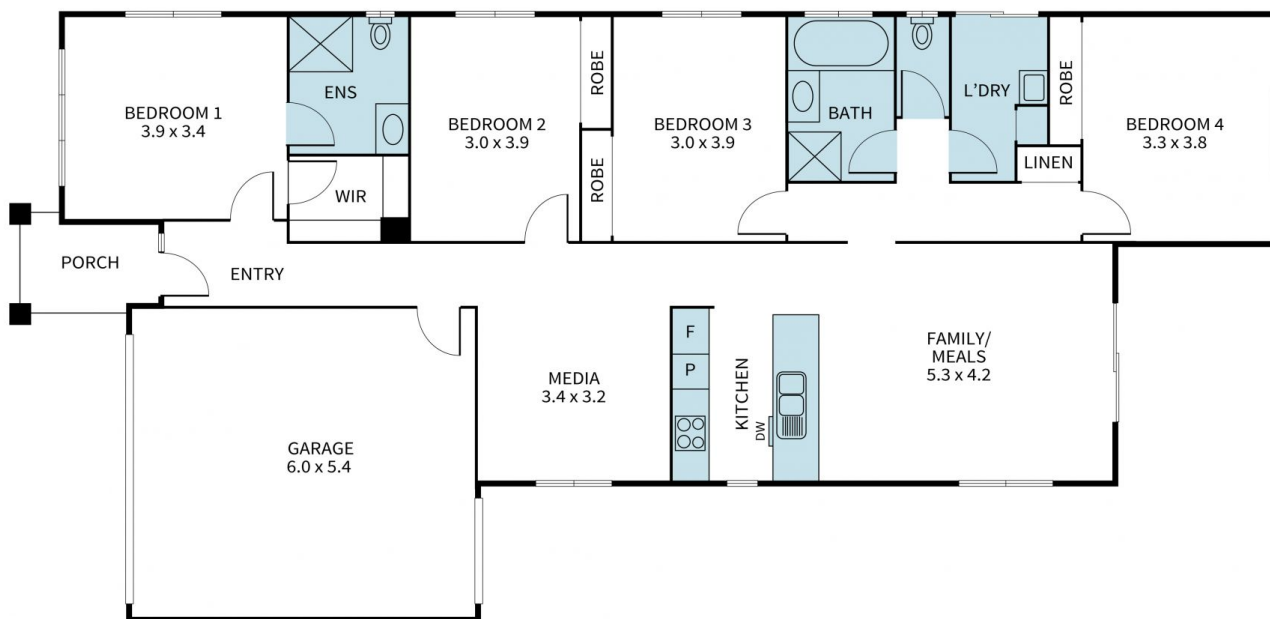


**William Shen**  
03 8686 8388



**Kailey Wang**  
03 8686 8388

[For full version visit the website](https://www.areal.com.au)



Disclaimer "Scale in metres. Indicative only. All information contained herein is obtained from sources we believe to be accurate. We cannot guarantee its accuracy. You should make and rely on your own enquiries."

