

5F/9 Waterside Place Docklands VIC

1 1 1

In the boutique Victoria Harbour precinct surrounded by marinas and a fabulous community lifestyle, this stunning one bedroom apartment is perfectly poised, facing the quay. A superb opportunity exist in this 5 Star address that is within the Docklands precinct with views over the Yarra, the West Gate Bridge, taking in Port Melbourne all the way to the heads of Port Phillip Bay.

This breathtaking apartment comprises of:
 ? One spacious bedroom with its own stylish bathroom
 ? A designer kitchen with stainless steel appliances and stone bench tops with an abundance of cupboard space
 ? A living room with an amazing view of the harbour and marina.

[For full version visit the website](https://www.areal.com.au)

Type : Apartment
Building Size : 55 sqm
View : <https://www.areal.com.au/sale/vic/inner-city/docklands/residential/apartment/7735014>

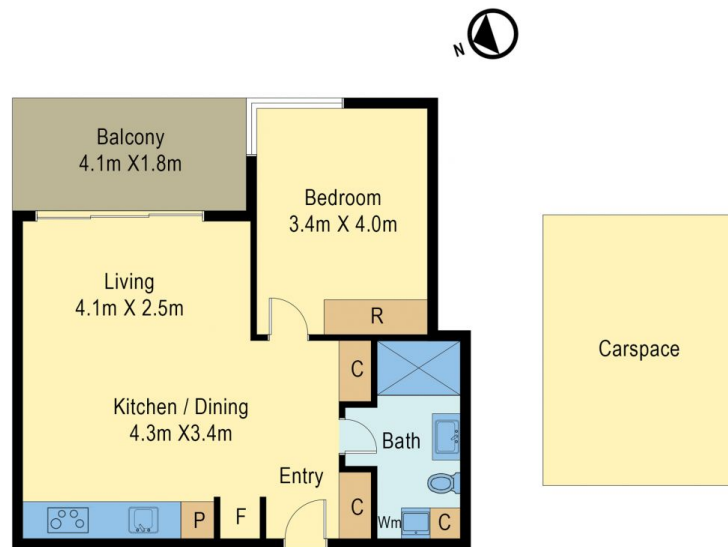


William Shen
03 8686 8388



Kailey Wang
03 8686 8388

5F / 9 Waterside Place, Docklands



FLOOR PLAN

Internal Area: 47 sqm (approx.)
Balcony Area: 7.5 sqm (approx.)
Total Area: 54.5 sqm (approx.)



All measurements are in metres. This plan is not to scale and provided as marketing material. All measurements are approximate and for illustrative purposes only. We make no guarantee of the accuracy of the plan, and you should independently determine the suitability of the property for your requirements.