



10 Ash Grove Bayswater VIC

3 1 1

YOU MUST REGISTER FOR THIS INSPECTION! IF YOU DO NOT REGISTER, WE ARE NOT ALLOWED TO TAKE YOU THROUGH THE PROPERTY. THANK YOU FOR YOUR COOPERATION.

Resting on a generous 980sqm (approx.) allotment, this original yet charming home is sure to peak the interest of a multitude of buyers including developers, investors and those wishing to build their dream home. The opportunities are endless at this first-class location, you do not want to miss out on this!

The existing dwelling is set towards the front of the block and presents the perfect opportunity for the next lucky

[For full version visit the website](https://www.areal.com.au)

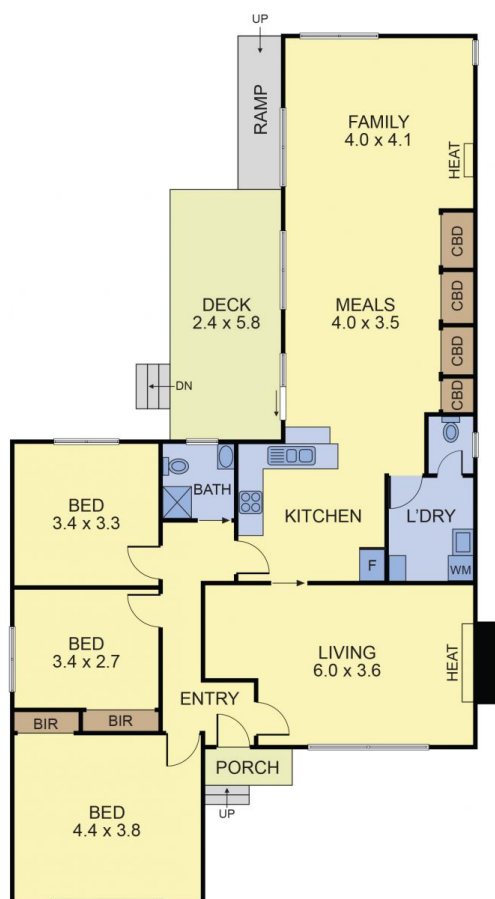
Type : House
Price : \$ 1,040,000
Land Size : 980 sqm
View : <https://www.areal.com.au/sale/vic/east/bayswater/residential/house/7734982>



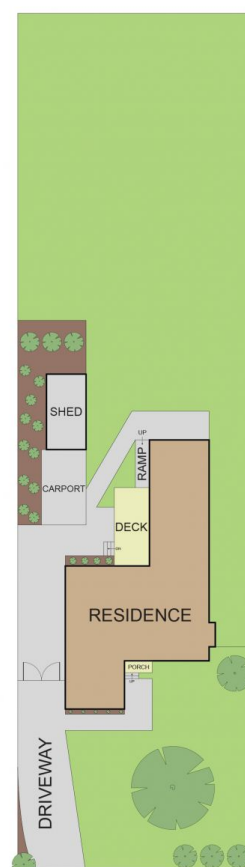
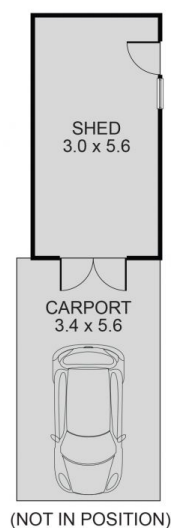
Linda Pan
03 8686 8388



William Shen
03 8686 8388



FLOOR PLAN



SITE PLAN



All measurements are in metres. This plan is not to scale and provided as marketing material. All measurements are approximate and for illustrative purposes only. We make no guarantee of the accuracy of the plan, and you should independently determine the suitability of the property for your requirements.