



G03/6C Evergreen Mews Armadale VIC

2 2 1

Contemporary and comfortable apartment living within an unbeatable location. Sounds too good to be true? This impeccable property offers modern luxury and style and is perfectly positioned just a short walk from parks, schools, shops, cafes, trams and Toorak station. The Melbourne CBD is within easy reach and you're also close to the beachside hub of St Kilda.

The layout has been designed to maximise the space on offer with an open-plan living area plus two good-size bedrooms and two bathrooms. The master is large and well-appointed with dual built-in robes and an ensuite. Bedroom two also has a built-in robe along with a glass sliding door that leads directly to the patio.

[For full version visit the website](https://www.areal.com.au)

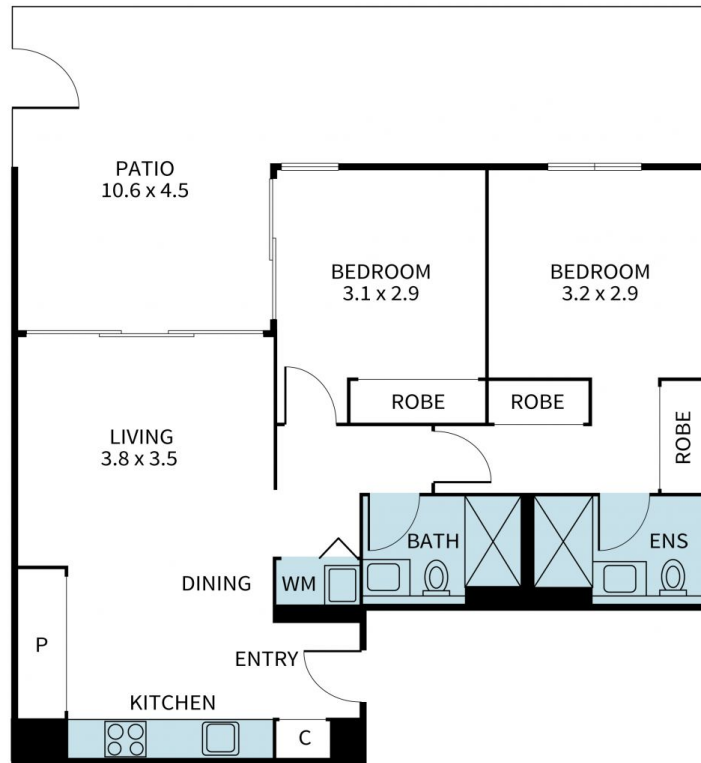
Type : Apartment
Price : \$ 700,000
Building Size : 88 sqm
View : <https://www.areal.com.au/sale/vic/east/armadale/residential/apartment/7734970>



Linda Pan
03 8686 8388



Kailey Wang
03 8686 8388



eReal

Disclaimer "Scale in metres. Indicative only. All information contained herein is obtained from sources we believe to be accurate. We cannot guarantee its accuracy. You should make and rely on your own enquiries."

