



2 Minot Court Keysborough VIC

3 2 2

What do we love about this property? Absolutely everything! If sheer perfection inside and out is what you're after, then look no further than this stunning town residence in the sought after Somerfield Estate.

Type : House

Price : \$ 830,000

View : <https://www.areal.com.au/sale/vic/south-east/keysborough/residential/house/7734956>

Architectural design and first-class features flow throughout the enticing property. The ground floor open plan living area, featuring high ceilings, luxe kitchen, continues on to the contemporary courtyard, garden lighting and access to the rear double garage. On the first floor, there are three good size bedrooms with walk-in robes and the master bedroom enjoys a private balcony.



Andy Yuan
03 8686 8388



Linda Pan
03 8686 8388

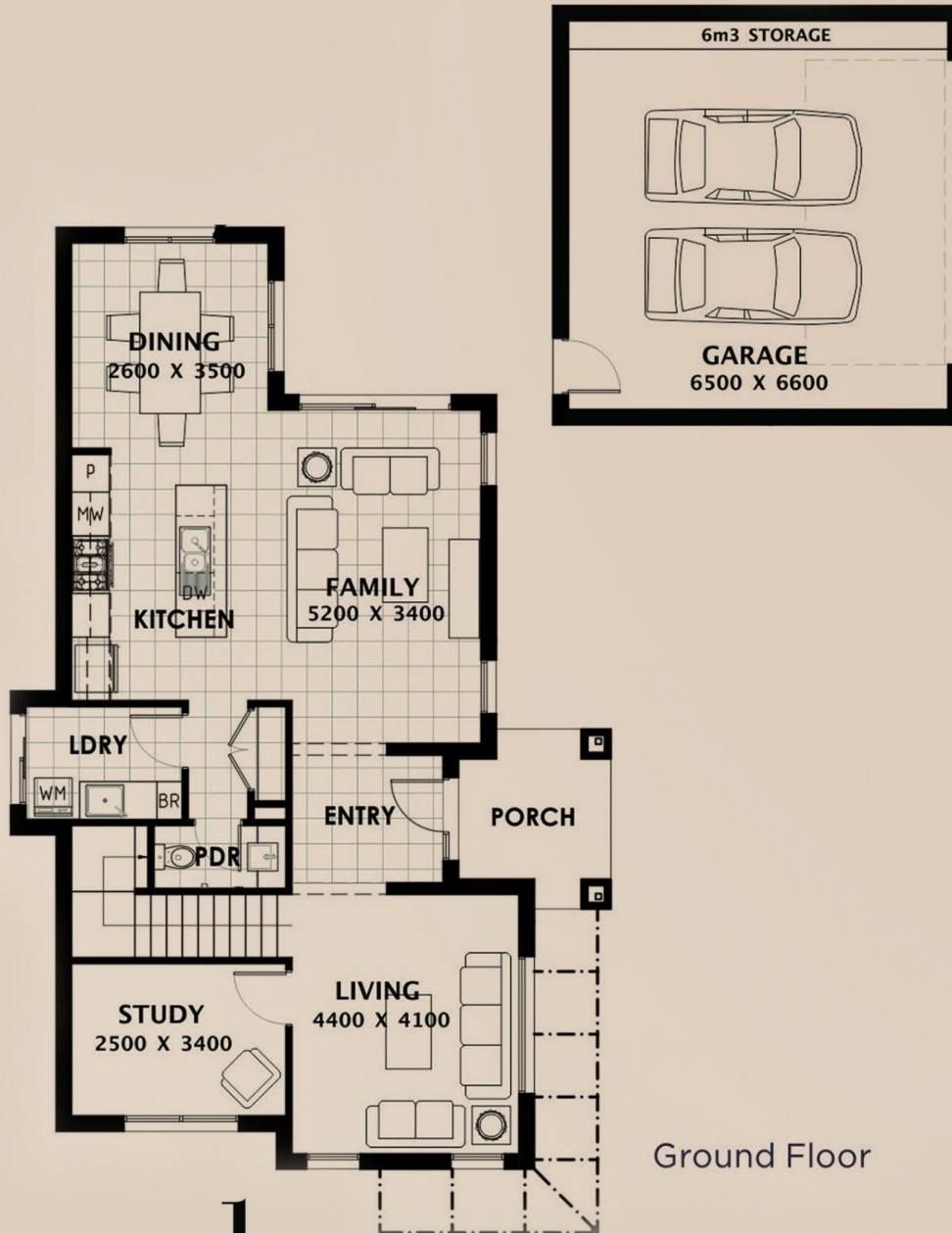
Completed with ducted heating, reverse cycle air conditioner and a great location close to shops, parks, bus transport, Eastlink and the Dandenong Bypass, it's the perfect place to start out in style, size down for easy living or make a smart addition to your investment portfolio.

? Stunning Somerfield Estate town residence in a quiet court location

? Open plan living, three robed bedrooms, bathroom, European laundry, powder room and double garage

? Ducted heating, reverse cycle air conditioners, luxe

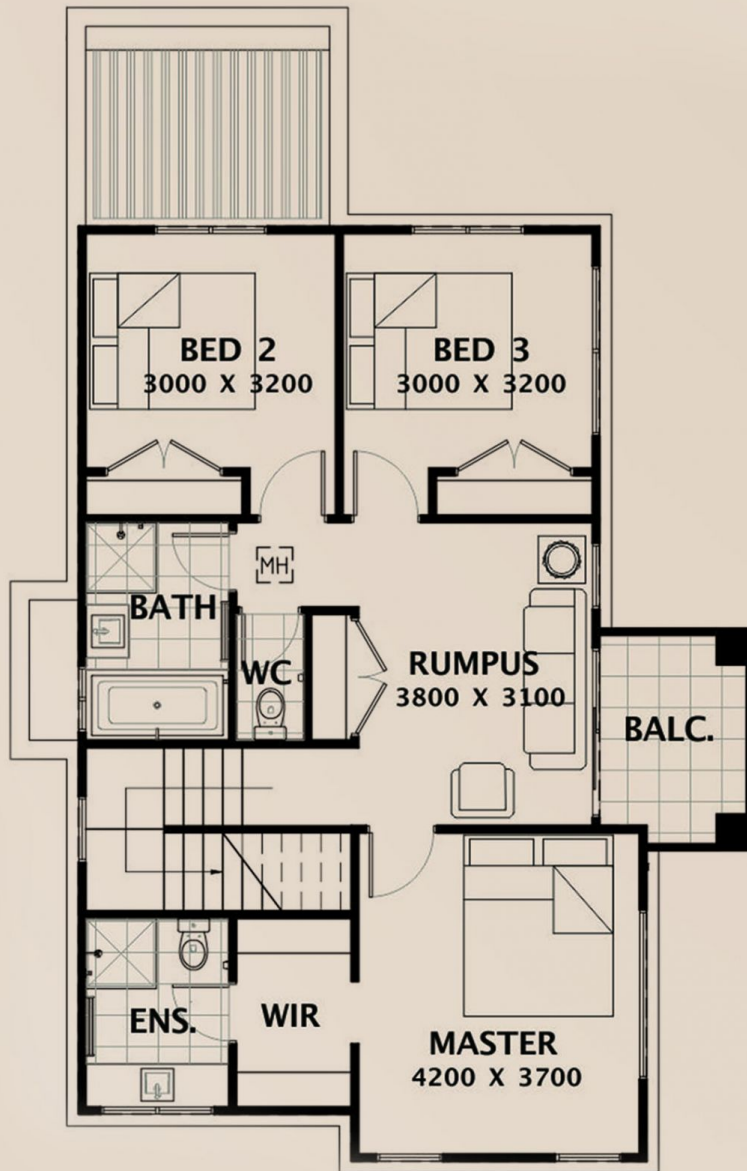
[For full version visit the website](https://www.areal.com.au)



Ground Floor



Disclaimer *Scale in metres. Indicative only. All information contained herein is obtained from sources we believe to be accurate. We cannot guarantee its accuracy. You should make and rely on your own enquiries.*



First Floor



Disclaimer *Scale in metres. Indicative only. All information contained herein is obtained from sources we believe to be accurate. We cannot guarantee its accuracy. You should make and rely on your own enquiries.*