



63 Stoneleigh Circuit Williams Landing VIC

4 2 2

Families on the lookout for a comfortable and spacious property to call home can't go past this impeccable two-storey abode. There are four large bedrooms and 2.5 bathrooms along with multiple light-filled living spaces and a study where you can comfortably work from home.

The ground floor houses the main living areas including the open-plan kitchen, family and meals zone. A glass sliding door opens to the covered alfresco where you can enjoy afternoon cocktails with guests while the kitchen is a home chef's dream. Stainless steel appliances, sweeping stone benchtops and sleek white cabinetry are all yours in this gourmet space along with a good-size walk-in pantry.

A separate living room extends the layout even further plus there's a powder room, study and laundry on this level. At

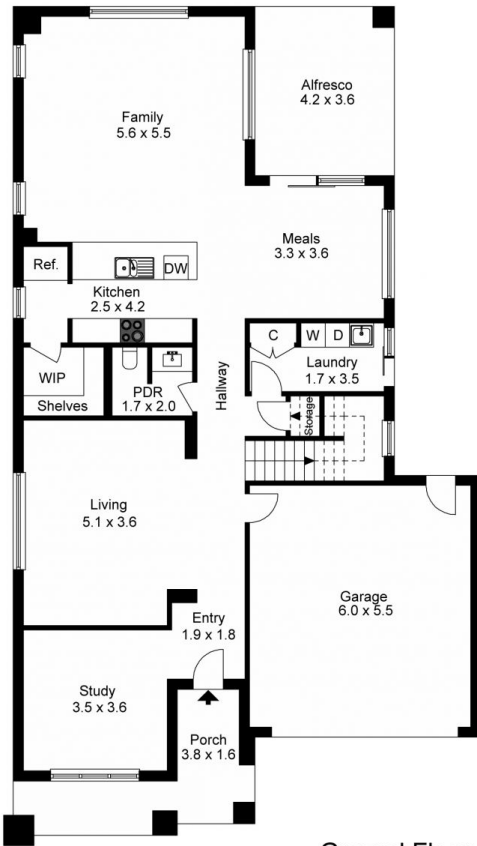
Price : \$ 880,000
Building Size : 271 sqm
Land Size : 513 sqm
View : <https://www.areal.com.au/sale/vic/west/williams-landing/residential/house/7734916>



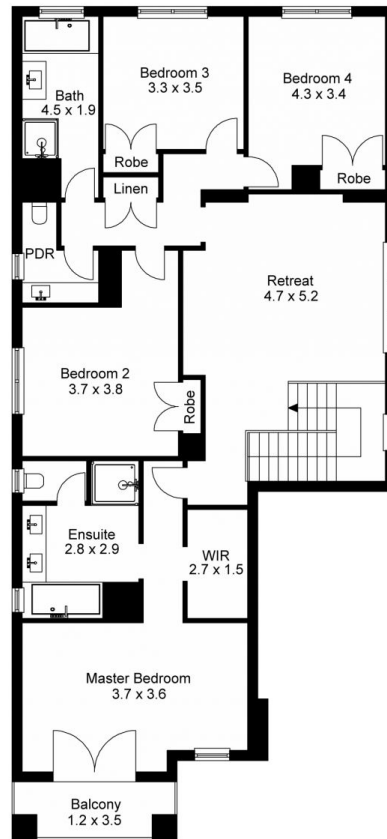
Andy Yuan
03 8686 8388



William Shen
03 8686 8388



Ground Floor



First Floor



The floor plan is not to scale; measurements are indicative and in metres. Exterior elements are not in position. Plans should not be relied on. Interested parties should make and rely on their own enquiries.



Ground Floor



First Floor



The floor plan is not to scale; measurements are indicative and in metres. All features included in this 3D plan are for inspiration purposes only. This is not an exact replica of the property or the position of exterior elements. Plans should not be relied on. Interested parties should make and rely on their own enquiries.

