

13 Winthrop Court Keysborough VIC

4 2 2

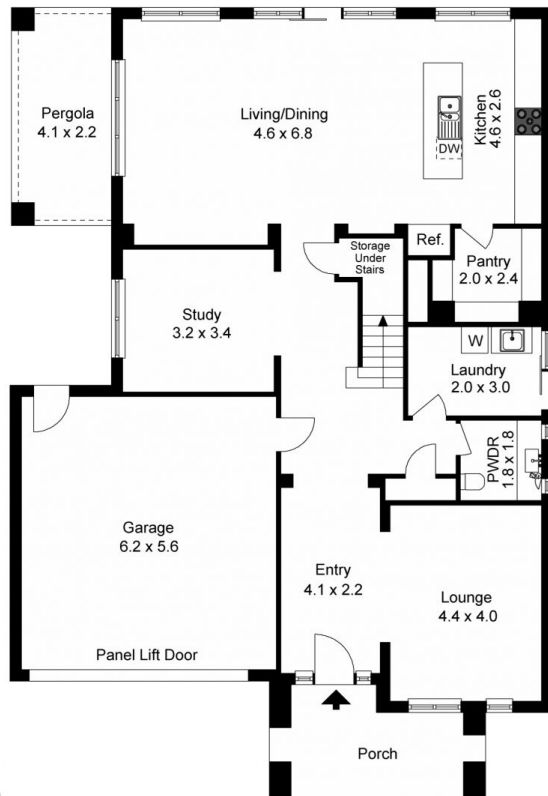
The peaceful cul-de-sac location immediately sets the tone for this family-friendly home crafted with modern living and comfort in mind. The expansive floorplan spans two light-filled levels and offers something for everyone whether you love to entertain, indulge in quiet escape or gather with loved ones and enjoy a delicious meal.

A selection of living spaces is on offer on the main level including a formal lounge room, a study and an open-plan kitchen, dining and living zone. For the avid cook, there's a walk-in pantry, a centre island and stainless steel appliances while outside, the eager host can entertain on the patio with a pergola. A powder room, laundry, under-stair storage and double garage, with internal access, add practicality to this impressive floorplan.

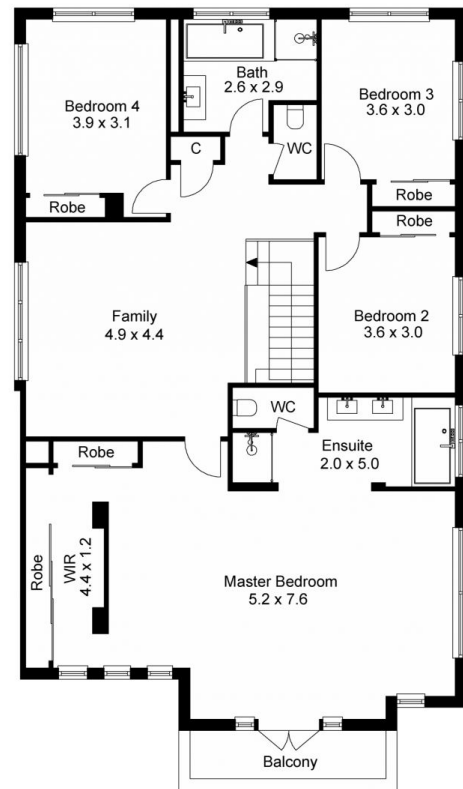
Price : \$ 1,150,000
Building Size : 288 sqm
Land Size : 524 sqm
View : <https://www.areal.com.au/sale/vic/south-east/keysborough/residential/house/7734910>



Linda Pan
03 8686 8388



Ground Floor



1st Floor

The floor plan is not to scale; measurements are indicative and in metres. Exterior elements are not in position. Plans should not be relied on. Interested parties should make and rely on their own enquiries.



Ground Floor



1st Floor

The floor plan is not to scale; measurements are indicative and in metres. All features included in this 3D plan are for inspiration purposes only. This is not an exact replica of the property or the position of exterior elements. Plans should not be relied on. Interested parties should make and rely on their own enquiries.

