



66 Ellsworth Crescent Camberwell VIC

3 3 1

From first-time buyers to young families, downsizers and astute property investors, this contemporary Camberwell home will appeal to a wide variety of house-hunters. The low-maintenance and stylish layout is sure to impress as will the prized location in a quiet street close to schools, parks, shops and amenities.

The split-level main floor features on-trend flooring, tall ceilings and crisp white walls. An open study is set just off the entry while at the rear of the layout you will find a light-filled and spacious kitchen, dining and living room. A suite of stainless steel appliances are on hand to make cooking a joy plus there's a breakfast bar for casual meals, sweeping benchtops and plenty of storage including a

Type : House

Price : \$ 1,308,000

View : <https://www.areal.com.au/sale/vic/east/camberwell/residential/house/7734891>

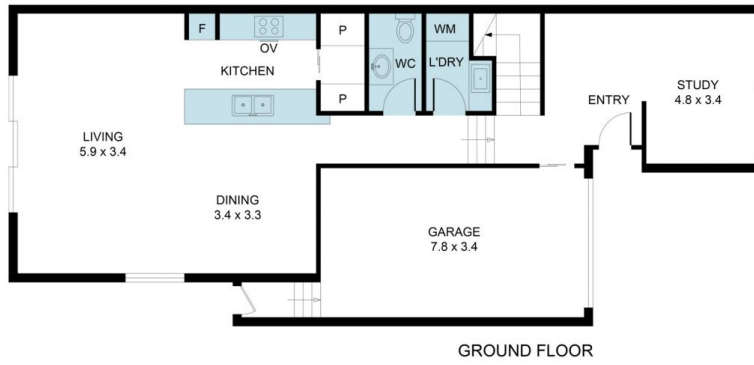


Linda Pan
03 8686 8388

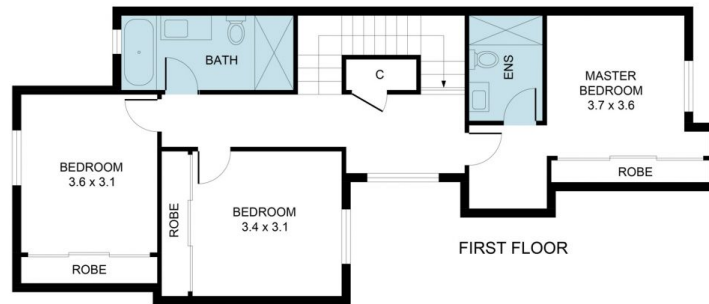


William Shen
03 8686 8388

[For full version visit the website](https://www.areal.com.au)



GROUND FLOOR



FIRST FLOOR



Disclaimer "Scale in metres. Indicative only. All information contained herein is obtained from sources we believe to be accurate. We cannot guarantee its accuracy. You should make and rely on your own enquiries."

