

403/20 Camberwell Road HAWTHORN EAST VIC

2 2 1

Inspection by private appointment available via registration.
To organise a private inspection, call Idamo Lee on 0427 150 725 or Andy Yuan 0406 217 388

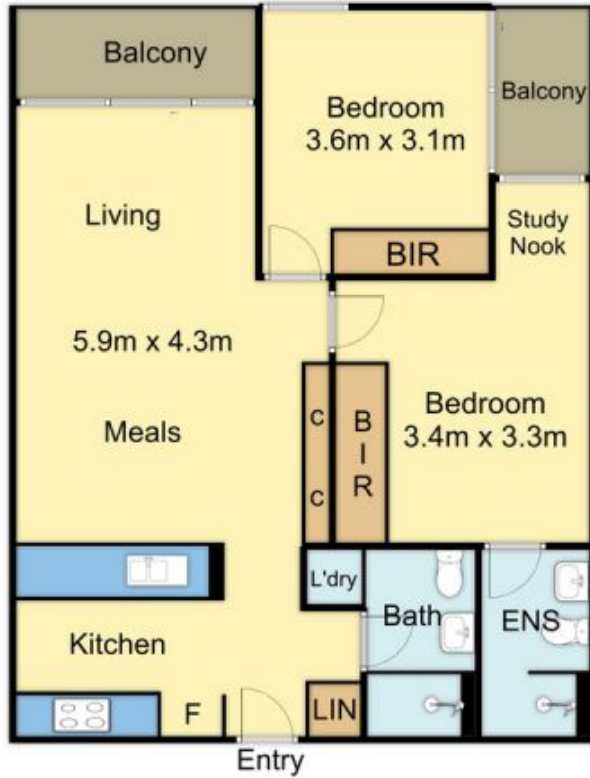
Seize the opportunity to enjoy a luxurious inner urban lifestyle in the sophisticated Leo building, right in the heart of Hawthorn East.

Designed to impress with stunning interiors by renowned Hecker Guthrie, sun-drenched open-plan living is the perfect accompaniment to an deluxe kitchen and outdoors to a private balcony.

Type : Apartment
Price : \$ 598,800
Building Size : 9 sqm
View : <https://www.areal.com.au/sale/vic/east/hawthorn-east/residential/apartment/7734820>

[For full version visit the website](https://www.areal.com.au)

403/20 Camberwell Road, Hawthorn East



Internal Area : 7.98 Squares (approx)
Balcony Area : 0.76 Squares (approx)
Total Area : 8.74 Squares (approx)

Internal Area : 74.1 sqm (approx)
Balcony Area : 7.1 sqm (approx)
Total Area : 81.2 sqm (approx)



All measurements are in metres. This plan is not to scale and provided as marketing material. All measurements are approximate and for illustrative purposes only. We make no guarantee of the accuracy of the plan, and you should independently determine the suitability of the property for your requirements.